

Contact Information

 RU/ENG/CH
Manager in China
+7 776 120 70 10

 RU/KZ
Manager in Kazakhstan
+7 706 820 55 55

 WWW.KAILASTRADE.COM

 kailas111@qq.com

INDUSTRIAL
VALVE & PIPE & FITTINGS
PROFESSIONAL
MANUFACTURER
工业管阀专业制造商



New High-tech Enterprise
高新技术企业



Zhejiang Makes It Happen
浙江制造 品质生活



>70000 grams injection molding machine
7万克注塑机



>Small injection molding machine arm
小型注塑机手臂

**WORKSHOP
EQUIPMENT**
车间设备



>70000 grams injection molding machine
7万克注塑机生产



>ERP process control
ERP流程管控



>Production mold drawing
生产模具图



>Machining center
加工中心



>Extrusion line
挤出生产线



>Precision machine production diagram
精工机台生产图



>Product diagram produced in the mold workshop
模具车间生产产品图

02-07

PERFORMANCE

性能



02 PVC-C OUTLINE
PVC-C 概述

03 PVC-CTUBING, FITTING, VALVE
PERFORMANCE
CHARACTERISTIC
PVC-C 管材、管件、阀门性能特点

04 PVDF OUTLINE
PVDF 概述

05 PROPERTIES OF PVC-U
PIPELINES USED IN WATER
SUPPLY AND CHEMICAL
APPLICATION
PVC-U 给水用、化工用管道系统特性

06 BEAT(B)-PP(PPH) MAIN
PROPERTIES
主要性能

08

PVC-C PIPE

PVC-C 管材系列



08 (ASTM) CPVC PIPE
PVC-C 美标管材

09

PVC-U PIPE

PVC-U 管材系列



09 (ASTM) UPVC PIPE
PVC-U 美标管材

10-15

PVC-C PIPE FITTING

PVC-C 管件系列



11 PVC-C COUPLING
PVC-C 直接

11 PVC-C ELBOW 90°
PVC-C 90°弯头

12 PVC-C TEE
PVC-C 三通

12 PVC-C ELBOW 45°
PVC-C 45°弯头

13 PVC-C CAP
PVC-C 管帽

13 PVC-C SOCKET FLANGE
PVC-C 法兰

14 PVC-C REDUCING TEE
PVC-C 异径三通

15 PVC-C REDUCER
PVC-C 大小头

15 PVC-C BUSHING
PVC-C 补芯

16-21

PVC-U PIPE FITTING

PVC-U 管件系列



17 PVC-U COUPLING
PVC-U 直接

17 PVC-U ELBOW 90°
PVC-U 90°弯头

18 PVC-U TEE
PVC-U 三通

18 PVC-U ELBOW 45°
PVC-U 45°弯头

19 PVC-U CAP
PVC-U 管帽

19 PVC-U SOCKET FLANGE
PVC-U 法兰

20 PVC-U REDUCING TEE
PVC-U 异径三通

21 PVC-U REDUCER
PVC-U 大小头

21 PVC-U BUSHING
PVC-U 补芯

22-43

VALVE

阀门系列



23 FLANGE DIAPHRAGM VALVE
法兰式隔膜阀 A 款

24 FLANGE DIAPHRAGM VALVE
法兰式隔膜阀 B 款

25 FLANGE BALL VALVE
法兰球阀

26 FLANGED BALL VALVE
法兰式由任球阀

27 HANDLE BUTTERFLY VALVE
通用型蜗轮式蝶阀

28 WORM GEAR BUTTERFLY VALVE
通用型手柄式蝶阀

30 BALL CHECK VALVE
立式止回阀

31 SWING CHECK VALVE
旋启式止回阀

32 BOTTOM VALVE
底阀

33 FLANGE GLOBE VALVE
截止阀

35 SIGHE GLASS
截止阀

36 LIQUID LEVEL GAUGE
液面计

37 ELECTRIC & PNEUMATIC FLANGED BALL VALVE
电、气动法兰球阀 (带平台)

42 ELECTRIC & PNEUMATIC SOCKET BALL VALVE
电、气动由任球阀

43 ELECTRIC & PNEUMATIC BUTTERFLY VALVE
电、气动由任球阀电、气动通用型无头蝶阀

44-51

PIPE FITTINGS AUXILIARY

MATERIALS OF CONSTRUCTION

管件管材辅助施工材料



45 PVC PIPE GLUE
PVC 管道胶水

45 PVC-C PIPE GLUE
PVC-C 管道胶水

45 PRE-ADHESIVE
预粘胶

46 MISUSE OF GLUE FOR FIRST AID
误用胶水的急救

46 STORAGE CONDITIONS
储存条件

46 THE BASIC CEMENTATION PRINCIPLE FOR SOLVENT ADHESIVE
溶剂型粘合剂的基本粘接原理

47 BONDING TECHNOLOGY OF PIPELINES
管道粘接技术

47 FIVE BASIC OPERATING METHODS
五项基本操作方法

49 BONDING UNDER LOW TEMPERATURE
低温气候下的连接

49 BONDING UNDER HIGH TEMPERATURE
高温气候下的连接

49 PRECAUTIONS
注意事项

50 GUIDE TO INSTALL
安装指南

51 FLANGE GASKET
法兰垫片

KAILAS
GROUP

DIRECTORY

目录

PVC-C OUTLINE

PVC-C 概述

- ◆PVC-C(Chlorinated polyvinyl chloride) has become an extremely important plastics materials in the engineering, it has a lot of merits such as relatively low cost,high hard embrittlement temperature(Tg) high thermal bending temperature,abtuse(inactive) chemical properties, excellent mechanical strength, no electric conductivity,safest conductivity and smokiness of combustion.
 - ◆The commercialized production and application of PVC-C was initiated by BF Goodrich Corporation in early 1960, PVC-C has received very high appraise in various industrial applications for its high-temperature resistance and perfect chemical resistance.
 - ◆In the concept,PVC-C is made from PVC Homopolymer through chloridization ,while in the models,PVC and chlorine take actions according to the reaction mechanism of free basic radicals,where can be started up with varied methods like heating and UV power,a common reaction process on the chloridization of free PVC radicals is described as below,where RH refers to PVC.
 - ◆The status and reaction capacity (chlorine) of PVC-C have vast difference by the different modes of chloridization. Compared with 63~69% as per general PVC-C ,the chlorine content of basic PVC of this PVC-C has been upgraded from 56.7% to 74%. Thanking to the increase of the increase of the chlorine content,the hard embrittlement temperature of polymer (Tg) will be greatly boosted, due to the increase of molecule weight of basic PVC ,Tg under same contentwill be also a lttle upgraded.
- ◆氯化聚氯乙烯 Chlorinated polyvinyl chloride (cpvc)由于其相对低成本、高硬质脆脂温度Tg、高热弯曲温度、化性迟钝不活泼、优异的机械性强度、非电导性、最安全的燃烧传导性和烟雾性，已使得 PVC-C 成为非常重要的工程塑胶材料。
- ◆PVC-C 最早是由BFGoodrich 公司在1960年代初期加以商业化生产及运用，它的耐高温及绝佳耐化性已在不同的工业应用中获得了极高的评估。
- ◆概念上PVC-C 是由PVC单质聚合物经过氯化作用形成的，典型上的PVC和氯是根据基础自由基反应机制进行作用,这可使用许多不同方法透过加热或 UV 能量加以启动，如下为较普通的 PVC 自由基氯化作用反应过程，其中 RH 代表 PVC。
- ◆PVC-C 会因不同氯化方式，其状况及氯的反应量有很大的差异性, CPVC 将基础PVC氯含量由56.7%提升至74%之高，而一般PVC-C仅止于 63~69% 氯含量而已。由于 CPVC 氯含量的增加会使得聚合物硬质脆化温度 Tg 显著的提升，此外由于基础 PVC 分子重量的增加也使得在相同氯含量水准时，Tg 亦有小比率的增加。

PVC-CTUBING,FITTING,CALVE PERFORMANCE CHARACTERISTIC

PVC-C 管材、管件、阀门性能特点

- ◆Wide operating temperature range: -20°C to 95°C.
 - ◆Excellent strength and tenacity.
 - ◆Excellent chemical and corrosive resistance.
 - ◆Self -extinguishing character in flame retardant property.
 - ◆Low thermal conductivity,about 1/200 of steel materials.
 - ◆The heavy ion of medium can meet the requirements as ultra pure water.
 - ◆Sanitary Indexes accord with National Sanitary Standards.
 - ◆Due to lean and smooth pipe wall,it has small friction and adhesive for when transmitting fluids.
 - ◆Light weight,equal to 1/5 of steel pipe and 1/6 of copper pipe.
 - ◆Easy to install,can be connected by cementing ,screwing and welding etc.
 - ◆Outstanding ageing resistance and anti-ultraviolet property ,its service life is greatly prolonged compared with normal one.
- ◆使用温度范围广: -20°C至 95°C
- ◆具有极佳的强度和韧性
- ◆具有优良的耐化学腐蚀性能
- ◆阻燃性能为自熄性
- ◆低热传导性能, 约为钢材的1/200
- ◆介质中重离子含量达超纯水标准
- ◆卫生指标符合国家卫生标准要求
- ◆管壁平洁光滑, 输送流体时具有较小的磨擦阻力和附着力
- ◆重量轻, 相当于钢管1/5,铜管的1/6
- ◆安装方便, 可采用粘接、螺纹、焊接等方式连接
- ◆优异的耐老化和抗紫外线性能,使正常使用寿命比其他管道系统均有很大的延长

PVDF OUTLINE

PVDF 概述

PVDF(Polyvinylidene fluoride)is nominated as F-2 in short, whose English Name PolyVinylidene Fluoride(PVDF for short),molecular formula (CF₂-CH₂)_n and molecular weight is 400~600 thousand.

PVDF is one of fluoride plastics developed in 1960s, it is a homopolymer which formed under the actions of trifluoroethylene, hydrofluoric acid and zinc dust, and polymerized into white crystalline solid.

The molecular structure of PVDF has large regularity,the size of fluorine atom and and hydrogen atoms is similar in the molecule, the lineage of macromolecule chains is compact and has strong hydrogen bond effects, therefore, the tensile strength, compressive strength and impact toughness of polymer is relatively high. The melting point of PVDF is low(about 170°C), so it has excellent performance of processing, easy shaping, it can be processed with general methods for thermal plastic like injection, mould pressing, extrusion and blow molding etc.

PVDF has excellent chemical stability, excellent chemical resistance and good thermal resisting stability, it can be long operated within the temperature range from -62°C to 150°C, furthermore, it is one of perfect insulation materials with a high dielectric constant, which can resist all mediums like salt ,acid ,alkaline, arene ,halogen and so on except for hydrochloric acid and strong solvent. It also enjoys the merits like no flame ,breaking resistance, wear resistance and good self lubricating property, Though its raw materials are Imported with high price and onetime investment, its price is greatly lower than imported pipe materials, it will bring you with obvious compressive economic effects on the basis of excellent corrosive resistance, incomparable service life, high safety coefficient and little maintenance.

PVDF: 聚偏氟乙烯简称 F-2, 英文名称 PolyVinylideneFluoride, 简称 PVDF, 分子式 $(CF_2-CH_2)_n$, 分子量为 40~60 万。

PVDF 是 60 年代发展的含氟塑料之一, 它是用三氟乙烯、氢氟酸与锌粉等作用生成单体, 再经聚合生成白色结晶固体, 属均聚物。

PVDF 分子结构规整性较大, 分子中氟原子和氢原子大小相似, 高分子链的排列紧密, 并存在着较强的氢键效应, 因此聚合物的拉伸强度, 压缩强度及冲击韧性等都比较大。PVDF 的熔点较低(170°C左右), 因此加工性能良好, 成型方便, 可用一般热塑料的加工方法(如注射、模压、挤出、吹塑等工艺成型)。

PVDF 的化学稳定性良好, 具有优良的耐化学腐蚀性和良好的耐热稳定性, 可在 -62°C ~ 150°C 温度范围内长期使用。同时解电常数大, 是良好的绝缘材料之一。能耐除盐酸, 强溶剂外的所有盐、酸、碱、芳烃、卤素等介质。不燃、耐疲折断、抗磨损、自润滑性能好, 虽原料进口, 价格昂贵, 一次性投入大, 但价格大大低于进口管材, 并以其优良耐腐蚀性能, 无与伦比的使用寿命、安全系数高、减少维修, 将给您带来显著的综合经济效益。

◆ PVDF MECHANICAL PHYSICAL PERFORMANCE PVDF 的机械物理性能

Ltem 项目	Numerical value 数值	Ltem 项目	Numerical value 数值
Relative density 相对密度	1.76	Pull and draw mould quality 拉伸弹性模量	840(Mpa)
Water-absorptivity 吸水率	0.04(%)	Bend mould quality 弯曲弹性模量	1400(Mpa)
Crystal melting point 晶体熔点	171(°C)	Compres mould quality 压缩弹性模量	840(Mpa)
Embrittled temperature 脆化温度	< -61(°C)	Degree of hardness 硬度	7(HB)
Compared to heat capacity 比热容	1170(J/Kg•k)	Friction coefficient(To steel) 摩擦系数(对钢)	0.14
Linear expansion coefficient 线膨胀系数	80x10(K)	Dielectric coefficient 介电系数(60Hz)	8.4
Thermal deformation temperature 热变形温度	150(°C), 0.46MPa	(10°Hz)	6.43
1.86MPa	90	Dieletric loss 介电损耗(60Hz)	0.05
Decomposition temperature 分解温度	316(°C)	(10°Hz)	0.16
Operating temperature scope 工作温度范围	-40-150(°C)	Volume resistance 体积电阻	2x10(Ω•cm)
Longitudinal strength 拉伸强度	49.2(Mpa), 25°C	Disruptive strength 击穿强度	>10(kv/m)
100°C	35.2	Arc resistanse耐电孤性	50-70(s)
Elongation ratio 伸长率	30-400(%)	Flammability 燃烧性	From extinguishes 自熄
Compressive strength 抗压强度	70(Mpa)	Transparency 透明性	Transparent- Translucent 透明-半透明
Impact intensity冲击强度	1.47x104(KJ/m2)	耐化学腐蚀性Bears chemistry corrosiveness	Good良好

PROPERTIES OF PVC-U PIPELINES USED IN WATER SUPPLY AND CHEMICAL APPLICATION

PVC-U 给水用、化工用管道系统特性

- ◆ Use temperature: Chemical pipeline use temperature range: -10 °C-60°C
Water supply pipe temperature range:-10°C-60°C
- ◆ The flame retardant performance is self-extinguishing;
- ◆ Hygienic performance: the water supply pipe system complies with GB/T17219;
- ◆ Low price: low material costs, different ratios of different projects;
- ◆ Corrosion resistance: It has excellent corrosion resistance. See the chemical resistance corrosion table of the product for details.
- ◆ High pressure resistance: the bursting pressure is 4~5 times of the working pressure to ensure the safety of the system quality level;
- ◆ Strong toughness: It has excellent strength and toughness and will not be damaged by external force or internal pressure.

- ◆ Smooth & clean wall: it has a small frictional resistance when transporting fluid, inhibits the growth of bacteria, and the fluid medium is not easy to attach;
- ◆ Anti-aging: good chemical stability, material testing and domestic and foreign engineering application examples prove that the actual life of PVC-U is more than 50 years.
- ◆ Good thermal insulation performance: low thermal conductivity, about 1/200 of steel, saving insulation materials and construction costs;
- ◆ Light weight: equivalent to 1/5 of steel pipe, 1/6 of copper pipe, easy to carry and install, saving time and cost.
- ◆ Convenient installation and construction: it can be connected by bonding, flange, thread, welding, etc.
- ◆ High comprehensive performance: low price, smooth inside and outside, no rust, no fouling, good corrosion resistance, simple construction, no heat transfer, no electricity, flame retardant, high mechanical strength, wide applicability.
- ◆ 使用温度: 化工管道使用温度范围: -10°C-60°C
给水管道使用温度范围: -10°C-60°C
- ◆ 阻燃性能为自熄性;
- ◆ 卫生性能: 给水管道系统符合GB/T17219;
- ◆ 价格低: 材料费用低, 不同工程比例不同;
- ◆ 耐腐蚀性: 具有优良的防腐性能, 详见产品耐化学性能腐蚀表;
- ◆ 耐压高: 爆破压力为工作压力4~5倍, 确保系统品质级安全;
- ◆ 韧性强: 具有极佳的强度和韧性, 不会受外力或内压变化大的情况下造成损害;
- ◆ 管壁光洁: 输送流体时具有较小的摩擦阻力, 抑制细菌滋生, 流体介质不易附着;
- ◆ 耐老化: 化学稳定性好, 材料试验及国内外工程应用实例证明, UPVC 正常使用实际寿命超过50年;
- ◆ 保温性能佳: 低热传导性能, 约为钢材的1/200, 节省保温材料及施工费用;
- ◆ 重量轻: 相当于钢管的1/5, 铜管的1/6, 搬运、安装简单轻松, 节省时间及费用。
- ◆ 安装施工方便: 可采用粘接、法兰、螺纹、焊接等方式连接;
- ◆ 综合性能高: 价格低, 内外部光滑、不生锈、不积垢、耐腐蚀性能佳、施工简便、不传热、不导电、阻燃机械强度高, 适用性广。

BEAT(B)-PP(PPH) MAIN PROPERTIES

主要性能

Beat(B)-PP(PPH) BE60-7032 is a high molecular weight low melt flow rate polypropylene homopolymer, which is modified by β and has a fine crystalline structure. It also has excellent impact strength even at low temperature. The static hydraulic strength is increased, the chemical resistance is increased, the temperature is increased, and the expansion coefficient is reduced to the lowest point of the same material. Beat (beta) - PP (PPH) be60-7032 is the brand name developed by the Nordic chemical industry for the production of industrial and ultra-pure pipe, pipe fitting, extrusion, and plate.

Beat(B)-PP(PPH) BE60-7032是一种高分子量低熔流率的均聚聚丙烯, 它经过 β 改性, 具有细腻的结晶结构。使它即使在低温下也有优异的抗冲击强度。增加了静液压强度, 增加了耐化学品性能, 提高了使用温度, 并使其膨胀系数降到同等材料最低点。Beat(B)-PP(PPH) BE60-7032 是北欧化工专为生产工业和超纯管道、管件、挤出、板材等研制的牌号。

◆ PIPELINES SYSTEM PERFORMANCE TABLE BEAT(B)-PP(PPH)主要性能

	Property 特性	Criterion 标准	Units 单位	β -PPH
Mechanical properties 机械性能	Density at (23°C) 密度(23°C)	DIN53479 ISO/R1183	g/m ³	0.91
	Melt flow index 熔融流动性 MFR190/5 CODET MFR230/5 CODEV MFI range	DIN53735 ISO1133	g/10min	0.5 1.25 M003
	Tensile stress at yield 屈服张应力	DIN53455 ISO/R527	N/mm ²	30
	Elongation at yield 屈服延伸率	DIN53452 ISO/R527	%	12
	Tensile stress at break 断裂张应力	DIN53495 ISO/R527	N/mm ²	45
	Elongation at break 断裂点延伸率	DIN53455 ISO/R527	%	> 50
	Flexural stress at 35% strain 应变35%时的张应力	DIN53457 ISO/R178	N/mm ²	28
	Modulus of elasticity (tensile test) 弹性模量抗拉试验	DIN53455 ISO/R537	N/mm ²	1150
	Modulus in shear 切变模量	DIN53445 ISO/R537	N/mm ²	650
	Ball indentation hardness 球压痕硬度	DIN53456 ISO2039	N/mm ²	67
	Charpy impact strength at (23°C) 切口冲击强度(23°C)	DIN53453 ISO/179/2C	KJ/m ²	50
	Charpy impact strength at (30°C) 切口冲击强度(-30°C)	DIN53453	KJ/m ²	35
	Thermal properties 热性能	Cristallinity melting temperature 临界熔点	ISO/179/2D DIN53736	°C
Vicat softening point 维卡软化点 VST-A/50 VST-B/50		DIN53460 ISO/R306	°C	95
Deflection temperature under load 承载状态下温度 Methode A 方法A Methode B 方法B		DIN53461 ISO75	°C	50 90
Thermal conductivity (at 20°C) 热导率		DIN52612	W/mk	0.22
Thermal expansion coefficient 热膨胀系数		DIN53752	1/°C	-4 1.0X10
Flammability 可燃性				B2 B2 94-HB
Electrical properties 电性能	Specific volume resistivity 特征体积电阻率	DIN53482 Teil 1 IEC Publ.93	Ohm cm	16 >10
	Dielectric strength 绝缘强度	DIN53481 IEC Publ.234	Kv/mm	75
	Surface resistivity 表面电阻率	DIN53482 IEC Publ.167		13 >10
	Colour 颜色	RAL	Ohm	RAL7037 grey (灰)

◆ APP TEMPERATURE BOUND LIST 应用温度范围表

Material 材料	Medium temperature °C 介质温度 °C	Material 材料	Medium temperature °C 介质温度 °C
PVC-C 氯化聚氯乙烯	-20°C - +95°C	PVC-U 聚氯乙烯	-5°C - +50°C
FRPP 增强聚丙烯	-20°C - +110°C -	PPH 均聚丙烯	-20°C - +110°C
PVDF 聚偏二氟乙烯	40°C - +150°C		

PVC-C PIPE

管材系列

Product Standards

执行标准: ASTM F441



PVC-U PIPE

管材系列

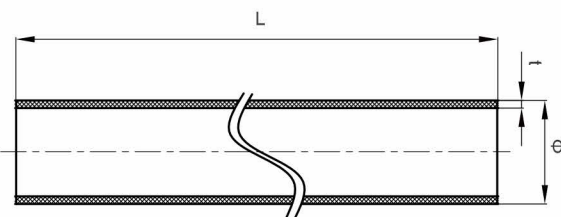
Product Standards

执行标准: ASTM D1785



ASTM)PVC-C PIPE

PVC-C 美标管材 SCH80

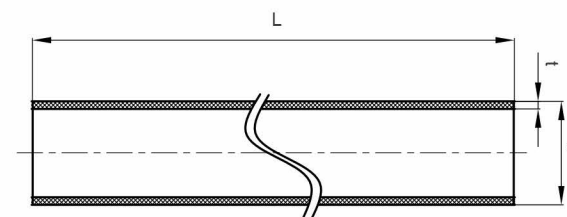


管材长度可根据客户需要定制

Specification 规格	Φ (mm)	t (mm)	L (mm)
1/2" (15)	21.34	3.8	6000
3/4" (20)	26.67	4	6000
1" (25)	33.4	4.6	6000
1¼" (32)	42.16	4.9	6000
1½" (40)	48.26	5.1	6000
2" (50)	60.32	5.6	6000
2½" (65)	73.02	7.1	6000
3" (80)	88.9	7.7	6000
4" (100)	114.3	8.6	6000
5" (125)	141.3	9.6	6000
6" (150)	168.28	11	6000
8" (200)	219.08	12.7	6000
10" (250)	273.05	15.06	6000
12" (300)	323.85	17.45	6000
14" (350)	355.60	19.05	6000
16" (400)	406.40	21.41	6000

ASTM)PVC-U PIPE

PVC-U 美标管材 SCH80



管材长度可根据客户需要定制

Specification 规格	Φ (mm)	t (mm)	L (mm)
1/2"(15)	21.34	3.8	6000
3/4"(20)	26.67	4	6000
1"(25)	33.4	4.6	6000
1¼"(32)	42.16	4.9	6000
1½"(40)	48.26	5.1	6000
2"(50)	60.32	5.6	6000
2½"(65)	73.02	7.1	6000
3"(80)	88.9	7.7	6000
4"(100)	114.3	8.6	6000
5"(125)	141.3	9.6	6000
6"(150)	168.28	11	6000
8"(200)	219.08	12.7	6000
10"(250)	273.05	15.06	6000
12"(300)	323.85	17.45	6000
14"(350)	355.60	19.05	6000
16"(400)	406.40	21.41	6000

PVC-C

PIPE FITTING SERIES

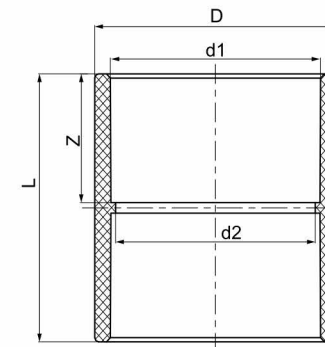
管件系列

Product Standards 执行标准: ASTM F439 SCH80



PVC-C COUPLING

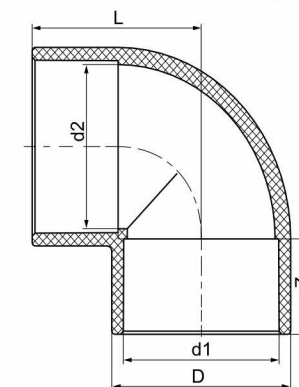
PVC-C 直接



Specification 规格	D1 (mm)	d1 (mm)	d2 (mm)	L (mm)	Z (mm)
1/2" (15)	30	21.34	18	49.5	22.5
3/4" (20)	36	26.67	23	56	25.5
1" (25)	44	33.4	29	63.5	29
1¼" (32)	53	42.16	38	69.5	32
1½" (40)	60	48.26	44	75.5	35
2" (50)	73	60.32	55	83	38.5
2½" (65)	89	73.02	68	96	45
3" (80)	106	88.9	83	102.5	48
4" (100)	134	114.3	109	121.5	57.5
5" (125)	162	141.3	134	140.5	67
6" (150)	192	168.28	160	160	76.5
8" (200)	247	219.08	210	211	102

PVC-C ELBOW 90°

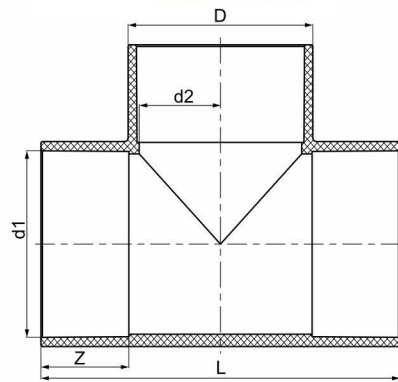
PVC-C 90°弯头



Specification 规格	D (mm)	d1 (mm)	d2 (mm)	L (mm)	Z (mm)
1/2" (15)	30	21.34	18	37.5	22.5
3/4" (20)	36	26.67	23	43.5	25.5
1" (25)	44	33.4	29	51	29
1¼" (32)	53	42.16	38	58.5	32
1½" (40)	60	48.26	44	65	35
2" (50)	73	60.32	55	75	38.5
2½" (65)	89	73.02	68	89.5	45
3" (80)	106	88.9	83	101	48
4" (100)	134	114.3	109	124.5	57.5
5" (125)	162	141.3	134	148	67
6" (150)	192	168.28	160	172.5	76.5
8" (200)	247	219.08	210	225.5	102
10" (250)	305	273.05	265	279.5	127

PVC-C TEE

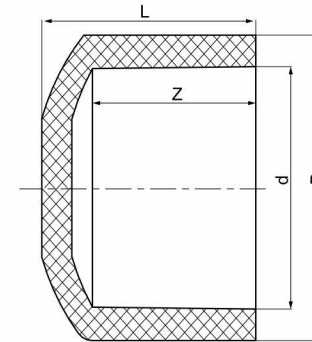
PVC-C 三通



Specification 规格	D (mm)	d1 (mm)	d2 (mm)	L (mm)	Z (mm)
1/2" (15)	30	21.34	18	72	22.5
3/4" (20)	36	26.67	23	83	25.5
1" (25)	44	33.4	29	98	29
1¼" (32)	53	42.16	38	113	32
1½" (40)	60	48.26	44	126	35
2" (50)	73	60.32	55	145	38.5
2½" (65)	89	73.02	68	173	45
3" (80)	106	88.9	83	196	48
4" (100)	134	114.3	109	242	57.5
5" (125)	162	141.3	134	289	67
6" (150)	192	168.28	160	337	76.5
8" (200)	247	219.08	210	441	102

PVC-C CAP

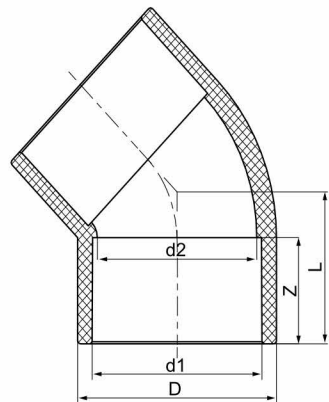
PVC-C 管帽



Specification 规格	d (mm)	Z (mm)	L (mm)	D (mm)
1/2" (15)	21.34	22.5	29.5	31.5
3/4" (20)	26.67	25.5	32.5	37
1" (25)	33.4	29	37	45
1¼" (32)	42.16	32	41	54.5
1½" (40)	48.26	35	47	61
2" (50)	60.32	38.5	54.5	74
2½" (65)	73.02	45	66	90
3" (80)	88.9	48	72	107
4" (100)	114.3	57.5	81.5	134
5" (125)	141.3	67	96	163
6" (150)	168.28	76.5	106.5	192
8" (200)	219.08	102	137.5	247

PVC-C ELBOW 45°

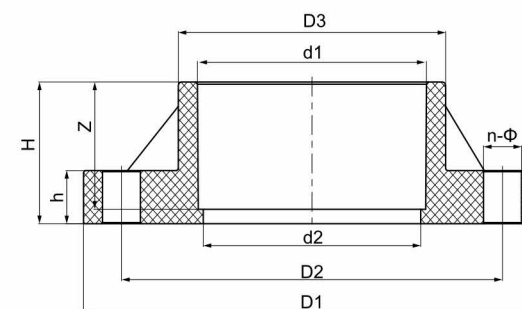
PVC-C 45°弯头



Specification 规格	D (mm)	d1 (mm)	d2 (mm)	L (mm)	Z (mm)
1/2" (15)	31.5	21.34	18	29	22.5
3/4" (20)	37	26.67	23	33.16	25.5
1" (25)	45	33.4	29	38.32	29
1¼" (32)	54.5	42.16	38	43.29	32
1½" (40)	61	48.26	44	47.6	35
2" (50)	74	60.32	55	53.8	38.5
2½" (65)	90	73.02	68	63.6	45
3" (80)	107	88.9	84	70.2	48
4" (100)	134	114.3	109	85.3	57.5
5" (125)	163	141.3	134	100.8	67
6" (150)	192	168.28	160	116.3	76.5
8" (200)	247	219.08	210	153.2	102

PVC-C SOCKET FLANGE

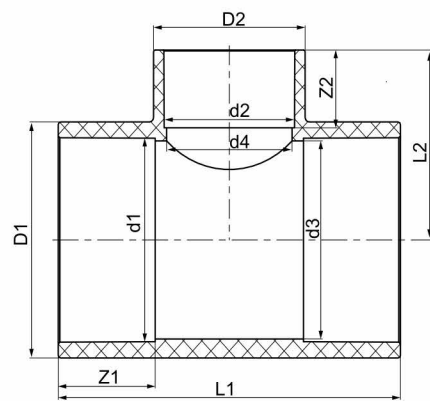
PVC-C 法兰



Specification 规格	D1 (mm)	D2 (mm)	D3 (mm)	d1 (mm)	d2 (mm)	H (mm)	h (mm)	Z (mm)	n-Φ
1/2" (15)	89	60	31.5	21.34	18	27	16	22.5	4-Φ16
3/4" (20)	95	70	37	26.67	23	30.5	18	25.5	4-Φ16
1" (25)	108	79	45	33.4	29	34.5	18	29	4-Φ16
1¼" (32)	117	89	54.5	42.16	38	37.5	18	32	4-Φ16
1½" (40)	127	98	61	48.26	44	40.5	20	35	4-Φ16
2" (50)	152	121	74	60.32	55	44.5	20	38.5	4-Φ19
2½" (65)	178	140	90	73.02	68	51	20	45	4-Φ19
3" (80)	191	152	107	88.9	83	54.5	21	48	4-Φ19
4" (100)	229	191	134	114.3	109	64	24	57.5	8-Φ19
5" (125)	254	216	163	141.3	134	73.5	25	67	8-Φ22
6" (150)	279	241	192	168.28	160	83.5	25	76.5	8-Φ22
8" (200)	343	299	247	219.08	210	109	29	102	8-Φ22

PVC-C REDUCING TEE

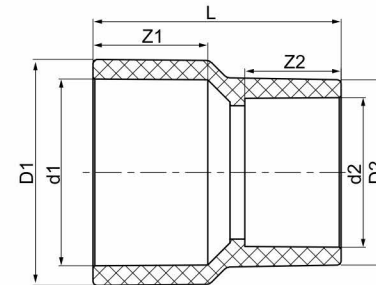
PVC-C 异径三通



Specification 规格	D1 (mm)	D2 (mm)	d1 (mm)	d2 (mm)	d3 (mm)	d4 (mm)	L1 (mm)	L2 (mm)	Z1 (mm)	Z2 (mm)
3/4" * 1/2" (20*15)	37	31.5	26.67	21.34	23	18	78	38.5	25.5	22.5
1" * 1/2" (25*15)	45	31.5	33.4	21.34	29	18	87	42.5	29	22.5
1" * 3/4" (25*10)	45	37	33.4	26.67	29	23	92	45.5	29	25.5
1 1/4" * 1/2" (32*15)	54.5	31.5	42.16	21.34	38	18	93	47	32	22.5
1 1/4" * 3/4" (32*20)	54.5	37	42.16	26.67	38	23	99	50	32	25.5
1 1/4" * 1" (32*25)	54.5	45	42.16	33.4	38	29	104	53.5	32	29
1 1/2" * 3/4" (40*20)	61	37	48.26	26.67	44	23	105	53.5	35	25.5
1 1/2" * 1" (40*25)	61	45	48.26	33.4	44	29	115	57	35	29
1 1/2" * 1 1/4" (40*32)	61	54.5	48.26	42.16	44	38	120	60	35	32
2" * 1" (50*25)	74	45	60.32	33.4	55	29	119	63	38.5	29
2" * 1 1/4" (50*32)	74	54.5	60.32	42.16	55	38	128	66	38.5	32
2" * 1 1/2" (50*40)	74	61	60.32	48.26	55	44	134	69	38.5	35
2 1/2" * 1 1/4" (65*32)	90	54.5	73.02	42.16	68	38	143	73.5	45	32
2 1/2" * 1 1/2" (65*40)	90	61	73.02	48.26	68	44	149	76.5	45	35
2 1/2" * 2" (65*50)	90	74	73.02	60.32	68	55	160	80	45	38.5
3" * 1 1/2" (80*40)	107	61	88.9	48.26	83	44	157	85	48	35
3" * 2" (80*50)	107	74	88.9	60.32	83	55	168	88.5	48	38.5
3" * 2 1/2" (80*65)	107	90	88.9	73.02	83	68	181	95	48	45
4" * 2" (100*50)	134	74	114.3	60.32	109	55	188	102	57.5	38.5
4" * 2 1/2" (100*65)	134	90	114.3	73.02	109	68	201	108.5	57.5	45
4" * 3" (100*80)	134	107	114.3	88.9	109	83	216	111.5	57.5	48
5" * 2 1/2" (125*65)	162	90	141.3	73.02	134	68	223	122.5	67	45
5" * 3" (125*80)	162	107	141.3	88.9	134	83	238	125.5	67	48
5" * 4" (125*100)	162	134	141.3	114.3	134	109	264	135	67	57.5
6" * 3" (150*80)	192	107	168.28	88.9	160	84	260	140	76.5	48
6" * 4" (150*100)	192	134	168.28	114.3	160	105	286	149.5	76.5	57.5
6" * 5" (150*125)	192	162	168.28	141.3	160	132	311	159	76.5	67
8" * 4" (200*100)	247	134	219.08	114.3	210	86	340	176	102	57.5
8" * 5" (200*125)	247	162	219.08	141.3	210	105	365	185.5	102	67
8" * 6" (200*150)	247	192	219.08	168.28	210	154	391	195	102	76.5

PVC-C REDUCER

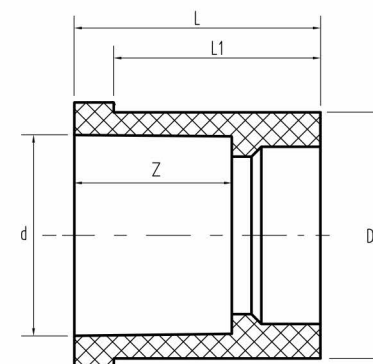
PVC-C 大小头



Specification 规格	D1 (mm)	D2 (mm)	d1 (mm)	d2 (mm)	L (mm)	Z1 (mm)	Z2 (mm)
2" * 1" (50*25)	74	45	60.32	33.4	87	38.5	29
2" * 1 1/4" (50*32)	74	54.5	60.32	42.16	86	38.5	32
2" * 1 1/2" (50*40)	74	61	60.32	48.26	86	38.5	35
2 1/2" * 1 1/4" (65*32)	90	54.5	73.02	42.16	98.5	45	32
2 1/2" * 1 1/2" (65*40)	90	61	73.02	48.26	98.5	45	35
2 1/2" * 2" (65*50)	90	74	73.02	60.32	97	45	38.5
3" * 1 1/2" (80*40)	107	61	88.9	48.26	109.5	48	35
3" * 2" (80*50)	107	74	88.9	60.32	107.5	48	38.5
3" * 2 1/2" (80*65)	107	90	88.9	73.02	109	48	45
4" * 2" (100*50)	134	74	114.3	60.32	129.5	57.5	38.5
4" * 2 1/2" (100*65)	134	90	114.3	73.02	131	57.5	45
4" * 3" (100*80)	134	107	114.3	88.9	127	57.5	48
5" * 2 1/2" (125*65)	163	90	141.3	73.02	154.5	67	45
5" * 3" (125*80)	163	107	141.3	88.9	150	67	48
5" * 4" (125*100)	163	134	141.3	114.3	146.5	67	57.5
6" * 3" (150*80)	192	107	168.28	88.9	173	76.5	48
6" * 4" (150*100)	192	134	168.28	114.3	170	76.5	57.5
6" * 5" (150*125)	192	163	168.28	141.3	167	76.5	67
8" * 4" (200*100)	247	134	219.08	114.3	221	102	57.5
8" * 5" (200*125)	247	163	219.08	141.3	218	102	67
8" * 6" (200*150)	247	192	219.08	168.28	215	102	76.5

PVC-C BUSHING

PVC-C 补芯



Specification 规格	D (mm)	d (mm)	L (mm)	L1 (mm)	Z (mm)	Specification 规格	D (mm)	d (mm)	L (mm)	L1 (mm)	Z (mm)
3/4" * 1/2" (20*15)	26.67	21.34	30.5	25.5	25.5	3" * 1 1/2" (80*40)	88.9	48.26	55	48	35
1" * 1/2" (25*15)	33.4	21.34	34	29	25.5	3" * 2" (80*50)	88.9	60.32	55	48	38.5
1" * 3/4" (25*10)	33.4	26.67	34	29	25.5	3" * 2 1/2" (80*65)	88.9	73.02	55	48	45
1 1/4" * 1/2" (32*15)	42.16	21.34	37	32	25.5	4" * 2" (100*50)	114.3	60.32	64.5	57.5	38.5
1 1/4" * 3/4" (32*20)	42.16	26.67	37	32	25.5	4" * 2 1/2" (100*65)	114.3	73.02	64.5	57.5	45
1 1/4" * 1" (32*25)	42.16	33.4	37	32	29	4" * 3" (100*80)	114.3	88.9	64.5	57.5	48
1 1/2" * 3/4" (40*20)	48.26	26.67	40	35	25.5	5" * 2 1/2" (125*65)	141.3	73.02	75	67	45
1 1/2" * 1" (40*25)	48.26	33.4	40	35	29	5" * 3" (125*80)	141.3	88.9	75	67	48
1 1/2" * 1 1/4" (40*32)	48.26	42.16	40	35	32	5" * 4" (125*100)	141.3	114.3	75	67	57.5
2" * 1" (50*25)	60.32	33.4	43.5	38.5	29	6" * 3" (150*80)	168.28	88.9	85	76.5	48
2" * 1 1/4" (50*32)	60.32	42.16	43.5	38.5	32	6" * 4" (150*100)	168.28	114.3	85	76.5	57.5
2" * 1 1/2" (50*40)	60.32	48.26	43.5	38.5	35	6" * 5" (150*125)	168.28	141.3	85	76.5	67
2 1/2" * 1 1/4" (65*32)	73.02	42.16	50	45	32	8" * 4" (200*100)	219.08	141.3	111	102	57.5
2 1/2" * 1 1/2" (65*40)	73.02	48.26	50	45	35	8" * 5" (200*125)	219.08	141.3	111	102	67
2 1/2" * 2" (65*50)	73.02	60.32	50	45	38.5	8" * 6" (200*150)	219.08	168.28	111	102	76.5

PVC-U

PIPE FITTING SERIES

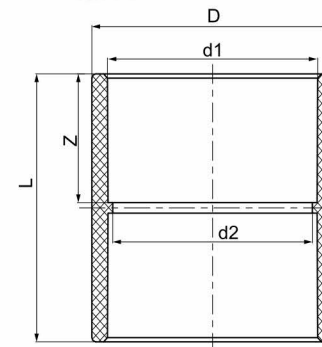
管件系列

Product Standards 执行标准: ASTM D2467 SCH80



PVC-U COUPLING

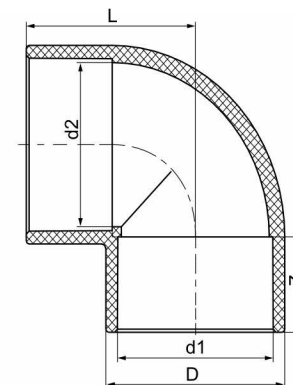
PVC-U 直接



Specification 规格	D1 (mm)	d1 (mm)	d2 (mm)	L (mm)	Z (mm)
1/2" (15)	30	21.34	18	49.5	22.5
3/4" (20)	36	26.67	23	56	25.5
1" (25)	44	33.4	29	63.5	29
1 1/4" (32)	53	42.16	38	69.5	32
1 1/2" (40)	60	48.26	44	75.5	35
2" (50)	73	60.32	55	83	38.5
2 1/2" (65)	89	73.02	68	96	45
3" (80)	106	88.9	83	102.5	48
4" (100)	134	114.3	109	121.5	57.5
5" (125)	162	141.3	134	140.5	67
6" (150)	192	168.28	160	160	76.5
8" (200)	247	219.08	210	211	102

PVC-U ELBOW 90°

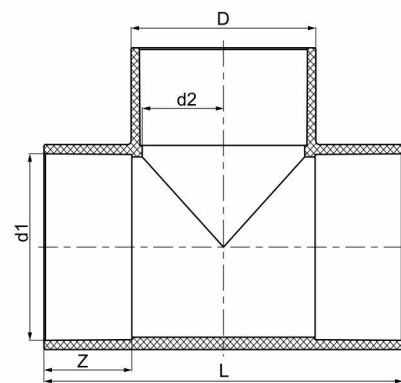
PVC-U 90°弯头



Specification 规格	D (mm)	d1 (mm)	d2 (mm)	L (mm)	Z (mm)
1/2" (15)	30	21.34	18	37.5	22.5
3/4" (20)	36	26.67	23	43.5	25.5
1" (25)	44	33.4	29	51	29
1 1/4" (32)	53	42.16	38	58.5	32
1 1/2" (D40)	60	48.26	44	65	35
2" (50)	73	60.32	55	75	38.5
2 1/2" (65)	89	73.02	68	89.5	45
3" (80)	106	88.9	83	101	48
3" (100)	134	114.3	109	124.5	57.5
5" (125)	162	141.3	134	148	67
6" (150)	192	168.28	160	172.5	76.5
8" (200)	247	219.08	210	225.5	102
10" (250)	305	273.05	265	279.5	127

PVC-U TEE

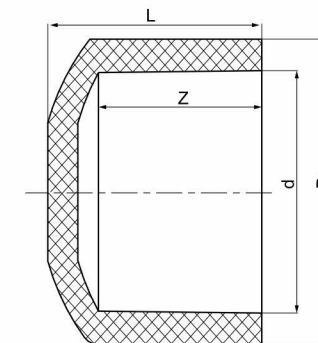
PVC-U 三通



Specification 规格	D (mm)	d1 (mm)	d2 (mm)	L (mm)	Z (mm)
1/2" (15)	30	21.34	18	72	22.5
3/4" (20)	36	26.67	23	83	25.5
1" (25)	44	33.4	29	98	29
1¼" (32)	53	42.16	38	113	32
1½" (40)	60	48.26	44	126	35
2" (50)	73	60.32	55	145	38.5
2½" (65)	89	73.02	68	173	45
3" (80)	106	88.9	83	196	48
4" (100)	134	114.3	109	242	57.5
5" (125)	162	141.3	134	289	67
6" (150)	192	168.28	160	337	76.5
8" (200)	247	219.08	210	441	102

PVC-U CAP

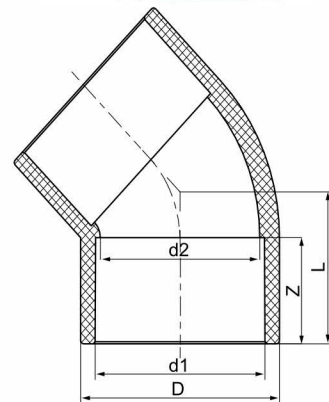
PVC-U 管帽



Specification 规格	d (mm)	Z (mm)	L (mm)	D (mm)
1/2" (15)	21.34	22.5	29.5	31.5
3/4" (20)	26.67	25.5	32.5	37
1" (25)	33.4	29	37	45
1¼" (32)	42.16	32	41	54.5
1½" (40)	48.26	35	47	61
2" (50)	60.32	38.5	54.5	74
2½" (65)	73.02	45	66	90
3" (80)	88.9	48	72	107
4" (100)	114.3	57.5	81.5	134
5" (125)	141.3	67	96	163
6" (150)	168.28	76.5	106.5	192
8" (200)	219.08	102	137.5	247

PVC-U ELBOW 45°

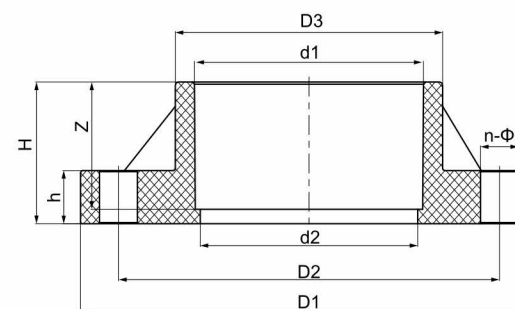
PVC-U 45°弯头



Specification 规格	D (mm)	d1 (mm)	d2 (mm)	L (mm)	Z (mm)
1/2" (15)	31.5	21.34	18	29	22.5
3/4" (20)	37	26.67	23	33.16	25.5
1" (25)	45	33.4	29	38.32	29
1¼" (32)	54.5	42.16	38	43.29	32
1½" (40)	61	48.26	44	47.6	35
2" (50)	74	60.32	55	53.8	38.5
2½" (65)	90	73.02	68	63.6	45
3" (80)	107	88.9	84	70.2	48
4" (100)	134	114.3	109	85.3	57.5
5" (125)	163	141.3	134	100.8	67
6" (150)	192	168.28	160	116.3	76.5
8" (200)	247	219.08	210	153.2	102

PVC-U SOCKET FLANGE

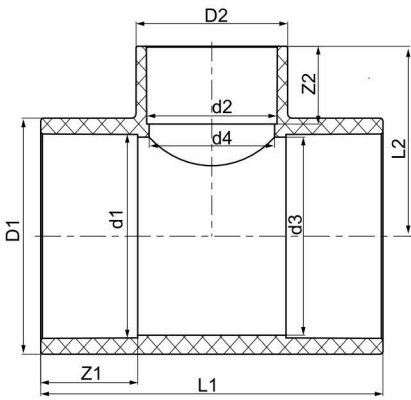
PVC-U 法兰



Specification 规格	D1 (mm)	D2 (mm)	D3 (mm)	d1 (mm)	d2 (mm)	H (mm)	h (mm)	Z (mm)	n-Φ
1/2" (15)	89	60	31.5	21.34	18	27	16	22.5	4-Φ16
3/4" (20)	95	70	37	26.67	23	30.5	18	25.5	4-Φ16
1" (25)	108	79	45	33.4	29	34.5	18	29	4-Φ16
1¼" (32)	117	89	54.5	42.16	38	37.5	18	32	4-Φ16
1½" (40)	127	98	61	48.26	44	40.5	20	35	4-Φ16
2" (50)	152	121	74	60.32	55	44.5	20	38.5	4-Φ19
2½" (65)	178	140	90	73.02	68	51	20	45	4-Φ19
3" (80)	191	152	107	88.9	83	54.5	21	48	4-Φ19
4" (100)	229	191	134	114.3	109	64	24	57.5	8-Φ19
5" (125)	254	216	163	141.3	134	73.5	25	67	8-Φ22
6" (150)	279	241	192	168.28	160	83.5	25	76.5	8-Φ22
8" (200)	343	299	247	219.08	210	109	29	102	8-Φ22

PVC-U REDUCING TEE

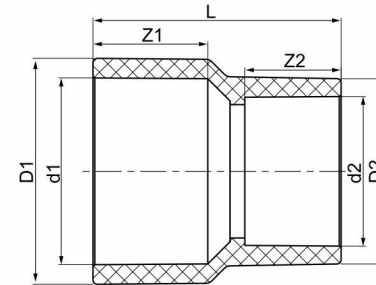
PVC-U 异径三通



Specification 规格	D1 (mm)	D2 (mm)	d1 (mm)	d2 (mm)	d3 (mm)	d4 (mm)	L1 (mm)	L2 (mm)	Z1 (mm)	Z2 (mm)
3/4" * 1/2" (20*15)	37	31.5	26.67	21.34	23	18	78	38.5	25.5	22.5
1" * 1/2" (25*15)	45	31.5	33.4	21.34	29	18	87	42.5	29	22.5
1" * 3/4" (25*10)	45	37	33.4	26.67	29	23	92	45.5	29	25.5
1 1/4" * 1/2" (32*15)	54.5	31.5	42.16	21.34	38	18	93	47	32	22.5
1 1/4" * 3/4" (32*20)	54.5	37	42.16	26.67	38	23	99	50	32	25.5
1 1/4" * 1" (32*25)	54.5	45	42.16	33.4	38	29	104	53.5	32	29
1 1/2" * 3/4" (40*20)	61	37	48.26	26.67	44	23	105	53.5	35	25.5
1 1/2" * 1" (40*25)	61	45	48.26	33.4	44	29	115	57	35	29
1 1/2" * 1 1/4" (40*32)	61	54.5	48.26	42.16	44	38	120	60	35	32
2" * 1" (50*25)	74	45	60.32	33.4	55	29	119	63	38.5	29
2" * 1 1/4" (50*32)	74	54.5	60.32	42.16	55	38	128	66	38.5	32
2" * 1 1/2" (50*40)	74	61	60.32	48.26	55	44	134	69	38.5	35
2 1/2" * 1 1/4" (65*32)	90	54.5	73.02	42.16	68	38	143	73.5	45	32
2 1/2" * 1 1/2" (65*40)	90	61	73.02	48.26	68	44	149	76.5	45	35
2 1/2" * 2" (65*50)	90	74	73.02	60.32	68	55	160	80	45	38.5
3" * 1 1/2" (80*40)	107	61	88.9	48.26	83	44	157	85	48	35
3" * 2" (80*50)	107	74	88.9	60.32	83	55	168	88.5	48	38.5
3" * 2 1/2" (80*65)	107	90	88.9	73.02	83	68	181	95	48	45
4" * 2" (100*50)	134	74	114.3	60.32	109	55	188	102	57.5	38.5
4" * 2 1/2" (100*65)	134	90	114.3	73.02	109	68	201	108.5	57.5	45
4" * 3" (100*80)	134	107	114.3	88.9	109	83	216	111.5	57.5	48
5" * 2 1/2" (125*65)	162	90	141.3	73.02	134	68	223	122.5	67	45
5" * 3" (125*80)	162	107	141.3	88.9	134	83	238	125.5	67	48
5" * 4" (125*100)	162	134	141.3	114.3	134	109	264	135	67	57.5
6" * 3" (150*80)	192	107	168.28	88.9	160	84	260	140	76.5	48
6" * 4" (150*100)	192	134	168.28	114.3	160	105	286	149.5	76.5	57.5
6" * 5" (150*125)	192	162	168.28	141.3	160	132	311	159	76.5	67
8" * 4" (200*100)	247	134	219.08	114.3	210	86	340	176	102	57.5
8" * 5" (200*125)	247	162	219.08	141.3	210	105	365	185.5	102	67
8" * 6" (200*150)	247	192	219.08	168.28	210	154	391	195	102	76.5

PVC-U REDUCER

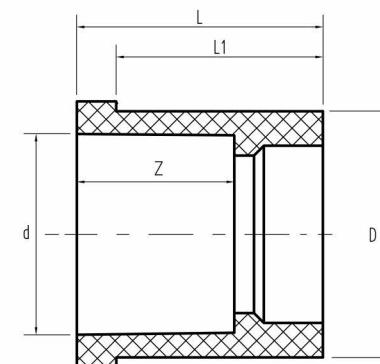
PVC-U 大小头



Specification 规格	D1 (mm)	D2 (mm)	d1 (mm)	d2 (mm)	L (mm)	Z1 (mm)	Z2 (mm)
2" * 1" (50*25)	74	45	60.32	33.4	87	38.5	29
2" * 1 1/4" (50*32)	74	54.5	60.32	42.16	86	38.5	32
2" * 1 1/2" (50*40)	74	61	60.32	48.26	86	38.5	35
2 1/2" * 1 1/4" (65*32)	90	54.5	73.02	42.16	98.5	45	32
2 1/2" * 1 1/2" (65*40)	90	61	73.02	48.26	98.5	45	35
2 1/2" * 2" (65*50)	90	74	73.02	60.32	97	45	38.5
3" * 1 1/2" (80*40)	107	61	88.9	48.26	109.5	48	35
3" * 2" (80*50)	107	74	88.9	60.32	107.5	48	38.5
3" * 2 1/2" (80*65)	107	90	88.9	73.02	109	48	45
4" * 2" (100*50)	134	74	114.3	60.32	129.5	57.5	38.5
4" * 2 1/2" (100*65)	134	90	114.3	73.02	131	57.5	45
4" * 3" (100*80)	134	107	114.3	88.9	127	57.5	48
5" * 2 1/2" (125*65)	163	90	141.3	73.02	154.5	67	45
5" * 3" (125*80)	163	107	141.3	88.9	150	67	48
5" * 4" (125*100)	163	134	141.3	114.3	146.5	67	57.5
6" * 3" (150*80)	192	107	168.28	88.9	173	76.5	48
6" * 4" (150*100)	192	134	168.28	114.3	170	76.5	57.5
6" * 5" (150*125)	192	163	168.28	141.3	167	76.5	67
8" * 4" (200*100)	247	134	219.08	114.3	221	102	57.5
8" * 5" (200*125)	247	163	219.08	141.3	218	102	67
8" * 6" (200*150)	247	192	219.08	168.28	215	102	76.5

PVC-U BUSHING

PVC-U 补芯



Specification 规格	D (mm)	d (mm)	L (mm)	L1 (mm)	Z (mm)	Specification 规格	D (mm)	d (mm)	L (mm)	L1 (mm)	Z (mm)
3/4" * 1/2" (20*15)	26.67	21.34	30.5	25.5	25.5	3" * 1 1/2" (80*40)	88.9	48.26	55	48	35
1" * 1/2" (25*15)	33.4	21.34	34	29	25.5	3" * 2" (80*50)	88.9	60.32	55	48	38.5
1" * 3/4" (25*20)	33.4	26.67	34	29	25.5	3" * 2 1/2" (80*65)	88.9	73.02	55	48	45
1 1/4" * 1/2" (32*15)	42.16	21.34	37	32	25.5	4" * 2" (100*50)	114.3	60.32	64.5	57.5	38.5
1 1/4" * 3/4" (32*20)	42.16	26.67	37	32	25.5	4" * 2 1/2" (100*65)	114.3	73.02	64.5	57.5	45
1 1/4" * 1" (32*25)	42.16	33.4	37	32	29	4" * 3" (100*80)	114.3	88.9	64.5	57.5	48
1 1/2" * 3/4" (40*20)	48.26	26.67	40	35	25.5	5" * 2 1/2" (125*65)	141.3	73.02	75	67	45
1 1/2" * 1" (40*25)	48.26	33.4	40	35	29	5" * 3" (125*80)	141.3	88.9	75	67	48
1 1/2" * 1 1/4" (40*32)	48.26	42.16	40	35	32	5" * 4" (125*100)	141.3	114.3	75	67	57.5
2" * 1" (50*25)	60.32	33.4	43.5	38.5	29	6" * 3" (150*80)	168.28	88.9	85	76.5	48
2" * 1 1/4" (50*32)	60.32	42.16	43.5	38.5	32	6" * 4" (150*100)	168.28	114.3	85	76.5	57.5
2" * 1 1/2" (50*40)	60.32	48.26	43.5	38.5	35	6" * 5" (150*125)	168.28	141.3	85	76.5	67
2 1/2" * 1 1/4" (65*32)	73.02	42.16	50	45	32	8" * 4" (200*100)	219.08	141.3	111	102	57.5
2 1/2" * 1 1/2" (65*40)	73.02	48.26	50	45	35	8" * 5" (200*125)	219.08	141.3	111	102	67
2 1/2" * 2" (65*50)	73.02	60.32	50	45	38.5	8" * 6" (200*150)	219.08	168.28	111	102	76.5

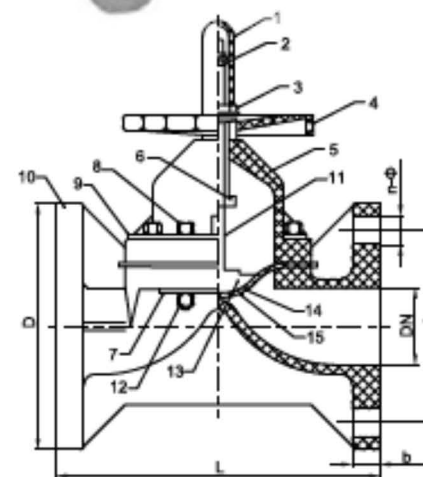
VALVE SERIES 阀门系列



FLANGE DIAPHRAGM VALVE

法兰式隔膜阀 A 款

ASTM(美标)



◆ PART MATERIAL TABLE 零件材质表

No. 序号	Name 零件名称	Material 材料	Qty. 数量
1	Cover Limit 透明罩	AS	1
2	Screw 指示螺母	Steel 钢	1
3	Retaining Nut 压紧螺母	65Mn	1
4	Hand Wheel 手轮	FRPP,FRPP,FRPP,PPH,FRPP	1
5	Bonnet 阀盖	CPVC,UPVC,PVDF,PVDF,FRPP	1
6	Nut 螺母	Copper 铜	1
7	Platen 下压板	Steel 钢	
8	Screw 螺栓	Steel 钢	
9	Platen 上压板	Steel 钢	
10	Body 阀体	Stell 钢 / 不锈	
11	Stem 阀杆	CPVC,UPVC,PVDF,PVDF,FRPP	1
12	Nut Cap 螺帽	CPVC,UPVC,PVDF,PPH,FRPP	1
13	Disc 阀瓣	PVDF,Iron 铁	1
14	Flim 膜垫	EPDM	1
15	Diaphragm 膜片	F46/PFA/PTFE	1

◆ DIMENSION LIST 外形尺寸表

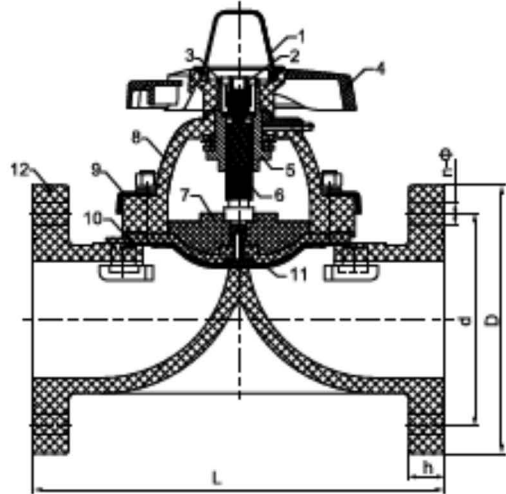
*注: 任何材质均可生产

Specification 规格	d (mm)	D (mm)	L (mm)	b (mm)	n-Φ (mm)
1/2"(15)	60	95	125	14	4-Φ16
3/4"(20)	70	115	135	18	4-Φ16
1"(25)	79	115	145	18	4-Φ16
1¼"(32)	89	135	160	18	4-Φ18
1½"(40)	98	145	180	20	4-Φ19
2"(50)	121	160	210	22	4-Φ19
2½"(65)	140	180	250	24	4-Φ19
3"(80)	152	195	300	24	8-Φ19
4"(100)	191	229	350	26	8-Φ19
5"(125)	216	250	400	30	8-Φ22
6"(150)	241	280	455	30	8-Φ23
8"(200)	299	343	570	40	8-Φ23
10"(250)	362	406	680	40	12-Φ23

FLANGE DIAPHRAGM VALVE

法兰式隔膜阀 B 款

ASTM(美标)



◆ PART MATERIAL TABLE 零件材质表

No. 序号	Name 零件名称	Material 材料	Qty. 数量
1	Cover Limit 透明罩	AS	1
2	Limit Nut 限位螺母	Stell 钢 / 不锈钢	1
3	Retaining ring 挡圈	65Mn	1
4	Hand Wheel 手轮	Alloy Material 合金料	1
5	Nut 螺母	Copper 镀铜 / 铜	1
6	Stem 阀杆	Copper 镀铜 / 铜	1
7	Disc 阀瓣	PVDF	1
8	Bonnet 阀盖	CPVC,UPVC,PVDF,PPH,FRPP	1
9	Platen 压板	Q345/Stell 不锈钢	1
10	Film 橡胶垫	EPDM	1
11	Diaphragm 膜片	F46/PFA/PTFE	1
12	Body 阀体	CPVC,UPVC,PVDF,PPH,FRPP,PTFE	1

◆ DIMENSION LIST 外形尺寸表

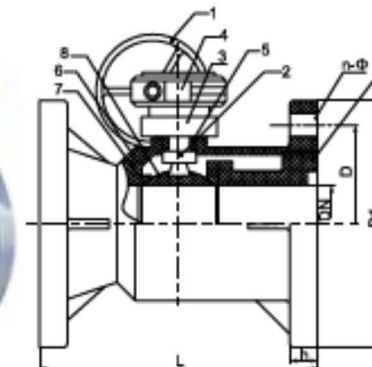
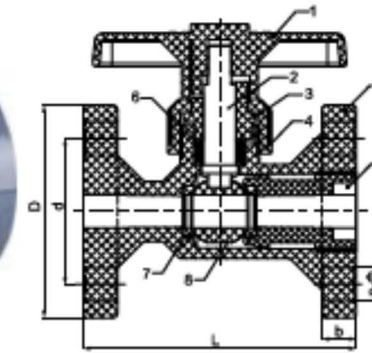
*注: 任何材质均可生产

Specification 规格	d (mm)	D (mm)	L (mm)	h (mm)	n-Φ (mm)
1/2"(15)	60.3	95	125	14	4-Φ16
3/4"(20)	69.9	100	135	18	4-Φ16
1"(25)	79.4	115	130	18	4-Φ16
1 1/4"(32)	88.9	135	160	18	4-Φ16
1 1/2"(40)	98.4	145	180	20	4-Φ16
2"(50)	120.7	160	210	22	4-Φ16
2 1/2"(65)	139.7	180	250	24	4-Φ18
3"(80)	152.4	195	300	24	4-Φ18
4"(100)	190.5	229	350	28	8-Φ18
5"(125)	215.9	250	410	35	8-Φ22
6"(150)	241.3	280	480	30	8-Φ22

FLANGE BALL VALVE

法兰球阀

ASTM(美标)



◆ PART MATERIAL TABLE 零件材质表

No. 序号	Name 零件名称	Material 材料	Qty. 数量
1	Handle 手柄	Alloy Material 合金料	1
2	Stem 阀杆	CPVC,UPVC,PVDF,PPH,FRPP	1
3	Inner Plug 定位圈	CPVC-C,UPVC,PVDF,CPVC-C,CPVC	1
4	Retaining 压紧螺母	CPVC,UPVC,PVDF,PPH,FRPP	1
5	Body 阀体	CPVC,UPVC,PVDF,PPH,FRPP	1
6	Stem seal 球密封圈	PTFE	4/5
7	Stem seal 头颈密封圈	PTFE	2
8	Ball 球	CPVC,UPVC,PVDF,PPH,FRPP	1
9	Seal seat 密封座	CPVC,UPVC,PVDF,PPH,FRPP	1

No. 序号	Name 零件名称	Material 材料	Qty. 数量
1	Handle 手轮	Cast iron 铸铁	1
2	Stem 阀杆	(FRPP,FRPP,PVDF,FRPP,FRPP)+ 铁	1
3	Inner Plug 限位圈	(CPVC,CPVC,PVDF,CPVC,CPVC)-C	1
4	Worm gear 蜗轮头	Cast iron 铸铁	1
5	Stem seal 密封圈	PTFE	1
6	Stem seal 阀体	CPVC,UPVC,PVDF,PPH,FRPP	4/5
7	Stem seal 密封圈	PTFE	2
8	Ball 球	CPVC,UPVC,PVDF,PPH,FRPP	1
9	Seal seat 密封座	CPVC,UPVC,PVDF,PPH,FRPP	1

◆ DIMENSION LIST 外形尺寸表

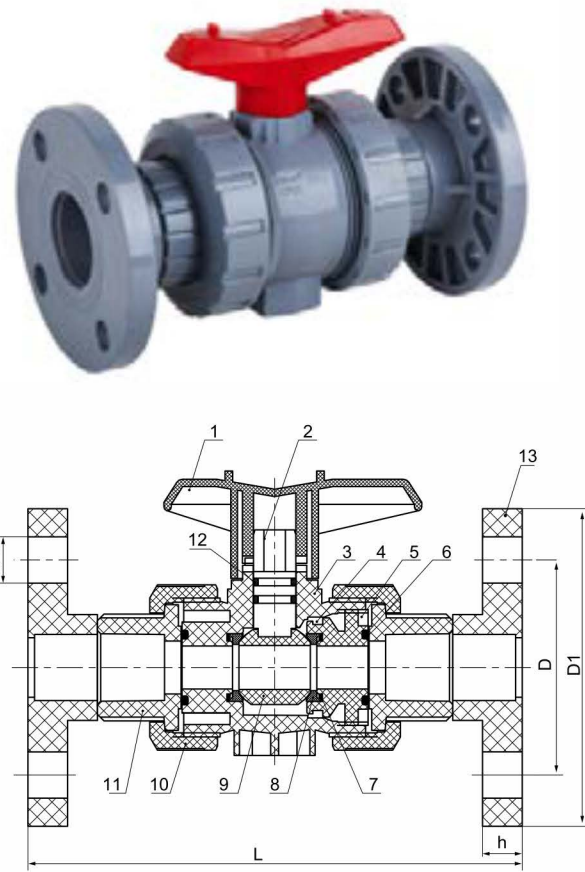
*注: 任何材质均可生产

Specification 规格	d (mm)	D (mm)	L (mm)	b (mm)	n-Φ (mm)
3/4"(20)	69.9	100	120	16	4-Φ16
1"(25)	79.4	110	130	16	4-Φ16
1 1/4"(32)	88.9	115	145	18	4-Φ16
1 1/2"(40)	98.4	125	168	20	4-Φ16
2"(50)	120.7	150	180	20	4-Φ18
2 1/2"(65)	139.7	180	225	22	4-Φ18
3"(80)	152.4	190	255	25	8-Φ18
4"(100)	190.5	229	280	25	8-Φ18
5"(125)	215.9	254	350	30	8-Φ22
6"(150)	241.3	280	400	30	8-Φ23

Specification 规格	D (mm)	D1 (mm)	L (mm)	h (mm)	n-Φ (mm)
8"(200)	299	335	400	35	8-Φ23
10"(250)	362	406	450	38	12-Φ25
12"(300)	431.8	485	600	46	12-Φ26

FLANGED BALL VALVE

法兰式球阀 (ASTM(美标))



◆PART MATERIAL TABLE 零件材质表

No. 序号	Name 零件名称	Material 材料				Qty. 数量
		CPVC	UPVC	PVDF	PPH	
1	Handle 手柄	Alloy Material 合金料				1
2	Stem 阀杆	CPVC	UPVC	PVDF	PPH	1
3	Body 阀体	CPVC	UPVC	PVDF	PPH	2
4	Seal 密封座O型圈1	FPM	EPDM	FPM	EPDM	1
5	Seal seat 密封座	CPVC	UPVC	PVDF	PPH	1
6	Seal 密封座O型圈2	FPM	EPDM	FPM	EPDM	2
7	Seal 密封座O型圈3	FPM	EPDM	FPM	EPDM	2
8	Stem seal 密封四氟	PTFE				2
9	Ball 球	CPVC	UPVC	PVDF	PPH	1
10	Retaining 压帽	CPVC	UPVC	PVDF	PPH	2
11	Union 由任接头	CPVC	UPVC	PVDF	PPH	2
12	Seal 阀杆O型圈	FPM	EPDM	FPM	EPDM	2
13	Flange 法兰	CPVC	UPVC	PVDF	PPH	2

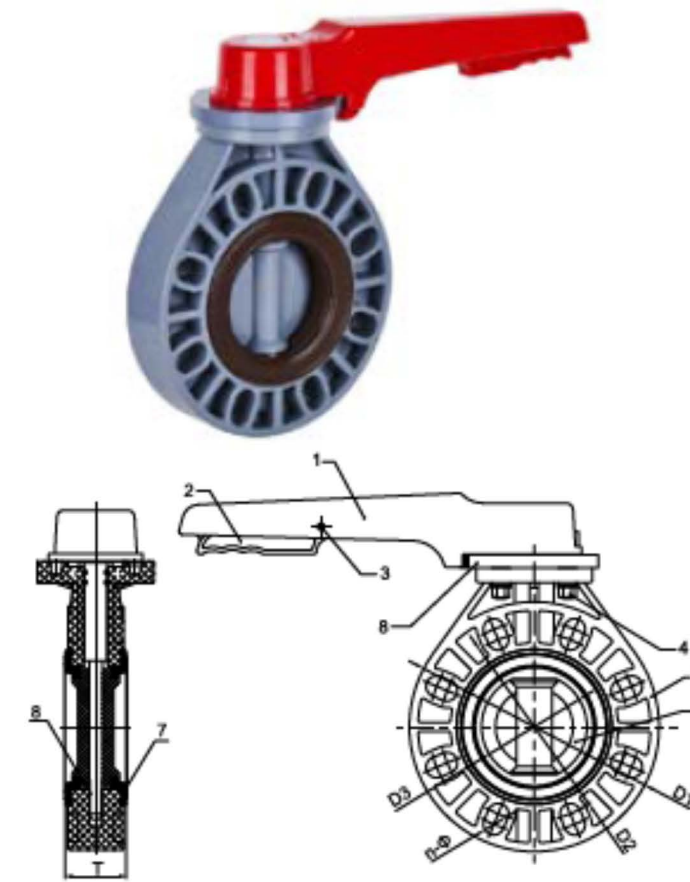
◆DIMENSION LIST 外形尺寸表

Specification 规格	D (mm)	D1 (mm)	(mm)				h (mm)	N-φ (mm)
			CPVC	UPVC	PVDF	PPH		
1/2"(15)	60	95	150		138	14	4-φ15	
3/4"(20)	70	105	174		158	16	4-φ15	
1"(25)	79	115	190		172	16	4-φ15	
1¼"(32)	89	140	220		196	18	4-φ19	
1½"(40)	98	150	240		206	18	4-φ19	
2"(50)	121	165	275		230	20	4-φ19	
2½"(65)	140	185	333		270	20	4-φ19	
3"(80)	152	200	396		320	20	8-φ19	
4"(100)	191	220	470		384	22	8-φ19	

HANDLE BUTTERFLY VALVE

通用型手柄式蝶阀

GB 国标, ASTM 美标 SCH80, JIS 日标



◆PART MATERIAL TABLE 零件材质表

No. 序号	Name 零件名称	Material 材料					Qty. 数量
		CPVC	UPVC	PVDF	PPH	FRPP	
1	Handle 手柄	Alloy Material 合金料					1
2	locating Rod 定位杆	Alloy Material 合金料					1
3	Positioning plate 定位板	Alloy Material 合金料					1
4	Nut Cap 螺帽罩	FRPP		PPH		FRPP	4
5	Body 阀体	CPVC	UPVC	PVDF	PPH	FRPP	1
6	Disc 阀瓣	CPVC	UPVC	PVDF	PPH	FRPP	1
7	Rubber Seal 密封橡胶	FPM	EPDM	FPM	EPDM		1
8	Stem 阀杆	Stell 钢					1
9	Pin 销子	Stell 钢					1

◆ DIMENSION LIST 外形尺寸表

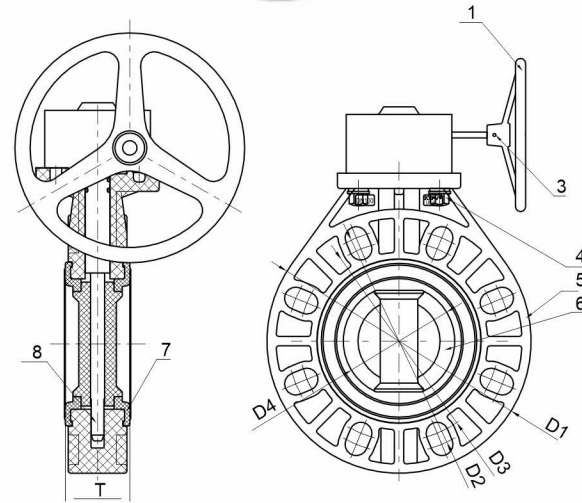
*注: 任何材质均可生产

Specification 规格	D1 (mm)	D2 (mm)	D3 (mm)	D4 (mm)	T (mm)	n-φ (mm)
1½"(40)	148	96	110	41.5	39	4-φ19*25
2"(50)	162	108	125	48.5	43	4-φ19*26
2½"(65)	180	128	145	63	45	4-φ19*26
3"(80)	196	148	160	75.5	45	8-φ19*24
4"(100)	225	168	191	95	56.5	8-φ19*29
5"(125)	255	200	216	120	65	8-φ23*31
6"(150)	285	225	241	143.5	75	8-φ23*31
8"(200)	340	280	299	195	85	8-φ23*32 JIS:12-φ23*27

WORM GEAR BUTTERFLY VALVE

通用型蜗轮式蝶阀

GB 国标, ASTM 美标 SCH80, JIS 日标



◆PART MATERIAL TABLE 零件材质表

No. 序号	Name 零件名称	Material 材料					Qty. 数量
		CPVC	UPVC	PVDF	PPH	FRPP	
1	Hand Wheel 手轮	Alloy Material 合金料					1
2	Worm gear 蜗轮头	Alloy Material 合金料					1
3	Pin 销子	Stell 钢					1
4	Nut Cap 螺帽罩	FRPP		PPH FRPP			4
5	Body 阀体	CPVC	UPVC	PVDF	PPH	FRPP	1
6	Disc 阀瓣	CPVC	UPVC	PVDF	PPH	FRPP	1
7	Rubber Seal 密封橡胶FPM	EPDM		FPM EPDM			1
8	Stem 阀杆	Stell 钢					1

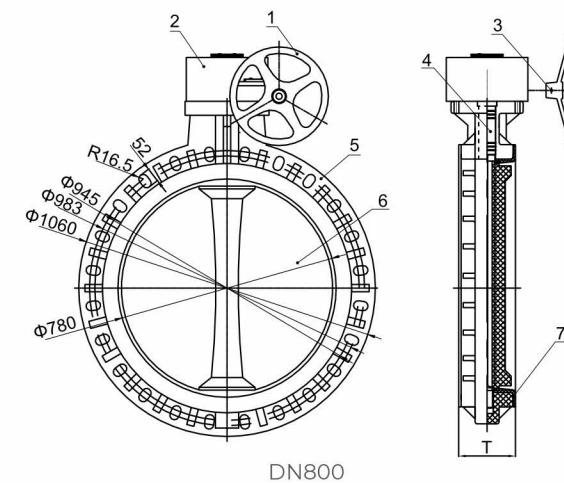
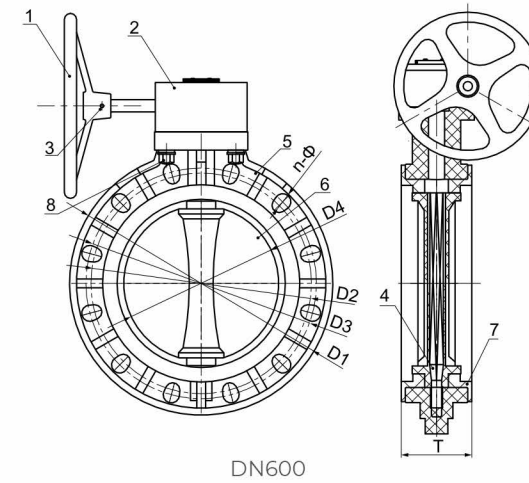
◆ DIMENSION LIST 外形尺寸表

Specification 规格	D1 (mm)	D2 (mm)	D3 (mm)	D4 (mm)	T (mm)	n-Φ (mm)
1½"(40)	148	96	110	41.5	39	4-Φ19*25
2"(50)	162	108	125	48.5	43	4-Φ19*26
2½"(65)	180	128	145	63	45	4-Φ19*26
3"(80)	196	148	160	75.5	45	8-Φ19*24
4"(100)	225	168	191	95	56.5	8-Φ19*29
5"(125)	255	200	216	120	65	8-Φ23*31
6"(150)	285	225	241	143.5	75	8-Φ23*31
8"(200)	340	280	299	195	85	8-Φ23*32 JIS:12-Φ23*27

WORM GEAR BUTTERFLY VALVE

通用型蜗轮式蝶阀

GB 国标, ASTM 美标 SCH80, JIS 日标



◆PART MATERIAL TABLE 零件材质表

No. 序号	Name 零件名称	Material 材料					Qty. 数量
		CPVC	UPVC	PVDF	PPH	FRPP	
1	Hand Wheel 手轮	Cast iron/Alloy Material 铸铁/合金料					1
2	Worm gear 蜗轮头	Cast iron/Alloy Material 铸铁/合金料					1
3	Pin 销子	Stell 钢					1
4	Stem 阀杆	Stell 钢					1
5	Body 阀体	CPVC	UPVC	PVDF	PPH	FRPP	1
6	Disc 阀瓣	CPVC	UPVC	PVDF	PPH	FRPP	1
7	Rubber Seal 密封橡胶FPM	EPDM		FPM EPDM			1
8	Nut Cap 螺帽罩	FRPP		PVDF PPH FRPP			4

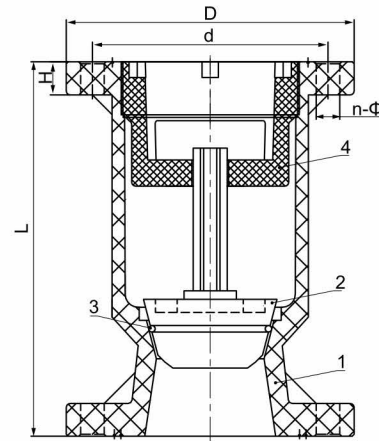
No. 序号	Name 零件名称	Material 材料	Qty. 数量
1	Hand Wheel 手轮	Cast iron 铸铁	1
2	Worm gear 蜗轮头	Cast iron 铸铁	1
3	Pin 销子	Stell 钢	1
4	Stem 阀杆	Stell 钢	1
5	Body 阀体	FRPP	1
6	Disc 阀瓣	FRPP	1
7	Rubber Sea 密封橡胶	EPDM	1

◆ DIMENSION LIST 外形尺寸表

Specification 规格	D1 (mm)	D2 (mm)	D3 (mm)	D4 (mm)	T (mm)	n-Φ (mm)
10"(250)	423	350	366	245.5	110	12-Φ23*32
12"(300)	495	400	436	291.5	115	12-Φ23*32
14"(350)	555	460	470	340	127	16-Φ22 12-Φ29
16"(400)	607	515	540	399	140	16-Φ23*45
18"(450)	645	565	583	446	150	20-Φ28.5 16-Φ34.5
20"(500)	708	615	640	494	150	20-Φ26*41
24"(600)	820	725	750	570	170	20-Φ35*47

BALL CHECK VALVE

立式止回阀
ASTM(美标)



◆PART MATERIAL TABLE 零件材质表

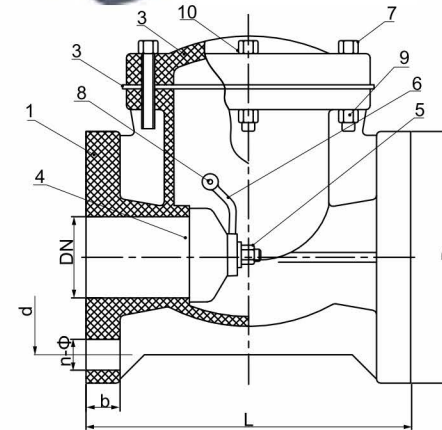
No. 序号	Name 零件名称	Material 材料					Qty. 数量
		CPVC	UPVC	PVDF	PPH	FRPP	
1	Body 阀体	PVC-C		PVDF	PPH	FRPP	1
2	Ball Core 球芯	PVC-C		PVDF-C		PVC-C	1
3	Rubber Seal 密封橡胶			FPM			1
4	Seal seat 密封座	PVC-C	PVC-U	PVDF	PPH	FRPP	1

◆DIMENSION LIST 外形尺寸表

Specification 规格	d (mm)	D (mm)	L (mm)	b (mm)	n-Φ (mm)
2"(50)	121	160	185	22	4-Φ19
4"(100)	191	215	285	25	8-Φ19
5"(125)	216	245	357	31	8-Φ22
6"(150)	241	280	410	30	8-Φ23
8"(200)	299	335	400	35	8-Φ23
10"(250)	362	406	450	38	12-Φ25
12"(300)	431.8	485	600	46	12-Φ26

SWING CHECK VALVE

旋启式止回阀
ASTM(美标)



◆ PART MATERIAL TABLE 零件材质表

No. 序号	Name 零件名称	Material 材料					Qty. 数量
		CPVC	UPVC	PVDF	PPH	FRPP	
1	Body 阀体	PVC-C	PVC-U	PVDF	PPH	FRPP	1
2	Bonnet 阀盖	PVC-C	PVC-U	PVDF	PPH	FRPP	1
3	Rubber Seal 密封橡胶	FPM	EPDM	FPM		EPDM	1
4	Capping 拍门	PVC-C	PVC-U	PVDF	PPH	FRPP	1
5	Retaining Screw 压紧螺栓	PVC-C	PVC-U	PVDF	PPH	FRPP	1
6	Rocker 摇杆	PVC-C	PVC-U	PVDF	PPH	FRPP	1
7	Screw 螺栓	Stell 钢		SS Steel 不锈钢		Stell 钢	6-16
8	Connecting rod 连接杆	PVC-C	PVC-U	PVDF	PPH	FRPP	1
9	Nut 螺母	Stell 钢		SS Steel 不锈钢		Stell 钢	6-32
10	Plate 压板	Stell 钢		SS Steel 不锈钢		Stell 钢	1

◆DIMENSION LIST 外形尺寸表

注:任何材质均可生产

Specification 规格	d (mm)	D (mm)	L (mm)	b (mm)	n-Φ (mm)
1/2"(15)	60	115	160	18	4-Φ16
3/4"(20)	70	115	160	18	4-Φ16
1"(25)	79	115	160	18	4-Φ16
1½"(40)	98	145	170	20	4-Φ16
2"(50)	121	160	200	21	4-Φ19
2½"(65)	140	180	240	25	4-Φ19
3"(80)	152	197	265	26	8-Φ19
4"(100)	191	215	300	26	8-Φ19
5"(125)	216	250	350	30	8-Φ22
6"(150)	241	280	400	30	8-Φ22
8"(200)	299	340	500	30	8-Φ22
10"(250)	362	390	575	38	12-Φ25

BOTTOM VALVE

底阀

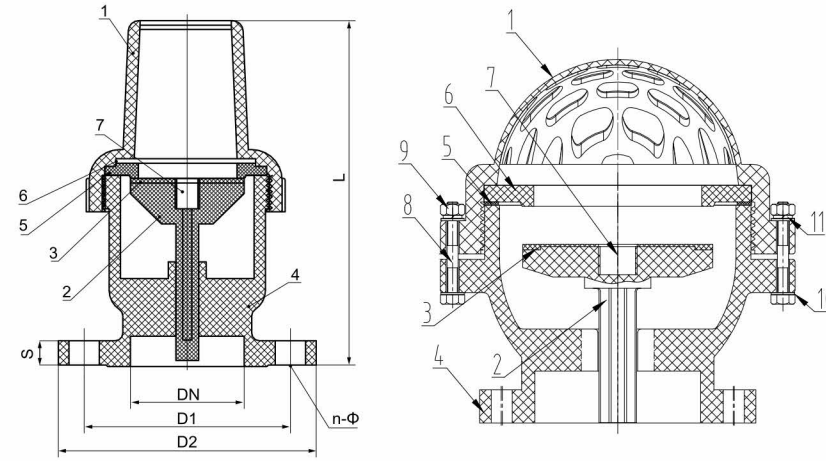
ASTM(美标)



直网式底阀



球网式底阀



◆ PART MATERIAL TABLE 零件材质表

No. 序号	Name 零件名称	Material 材料					Qty. 数量
		CPVC	UPVC	PVDF	PPH	FRPP	
1	Net Cap 网罩	CPVC	UPVC	PVDF	PPH	FRPP	1
2	Piston 活塞	CPVC	UPVC	PVDF	PPH	FRPP	1
3	Rubber Seal 密封橡胶	FPM	EPDM	FPM	EPDM		1
4	Body 阀体	CPVC	UPVC	PVDF	PPH	FRPP	1
5	Rubber Seal 密封橡胶	FPM	EPDM	FPM	EPDM		1
6	Partition 隔板	CPVC	UPVC	PVDF	PPH	FRPP	1
7	Retaining Nut 压紧螺母	CPVC	UPVC	PVDF	PPH	FRPP	1
8	Single Head Bolt 单头螺栓	304 不锈钢	镀锌	304 不锈钢	镀锌		12
9	Nut 螺母	304 不锈钢	镀锌	304 不锈钢	镀锌		12
10	Gasket 垫片	304 不锈钢	镀锌	304 不锈钢	镀锌		24
11	Cushion Pad 弹垫	304 不锈钢	镀锌	304 不锈钢	镀锌		12

*注: 仅 125-200 有 8-11 内容

◆ DIMENSION LIST 直网式外形尺寸表

Specification 规格	L (mm)	D1 (mm)	D2 (mm)	S (mm)	N-Φ (mm)
2"(50)	215	121	160	16	4-Φ17x20
2½"(65)	235	140	170	16	4-Φ15x19
4"(100)	315	191	220	23	8-Φ18x20

◆ DIMENSION LIST 球网式底阀外形尺寸表

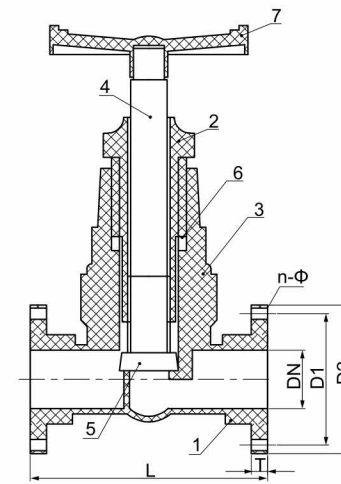
注: 任何材质均可生产

Specification 规格	L (mm)	D1 (mm)	D2 (mm)	S (mm)	N-Φ (mm)
5"(125)	330	216	250	28	8-Φ18
6"(150)	330	241	282	30	8-Φ21
8"(200)	380	299	335	32	8-Φ23

FLANGE GLOBE VALVE

截止阀

ASTM(美标)



◆ PART MATERIAL TABLE 零件材质表

No. 序号	Name 零件名称	Material 材料					Qty. 数量
		CPVC	UPVC	PVDF	PPH	FRPP	
1	Body 阀体	CPVC	UPVC	PVDF	PPH	FRPP	1
2	Lock Block 压块	CPVC	UPVC	PVDF	PPH	FRPP	1
3	Connectors 连接件	CPVC	UPVC	PVDF	PPH	FRPP	1
4	Capping 阀杆	CPVC	UPVC	PVDF	PPH	FRPP	1
5	Sealing Cover 密封盖	CPVC	UPVC	PVDF	PPH	FRPP	1
6	Stem seal 密封四氟	PTFE					1
7	Handle Wheel 手轮	Alloy Material 合金料					1

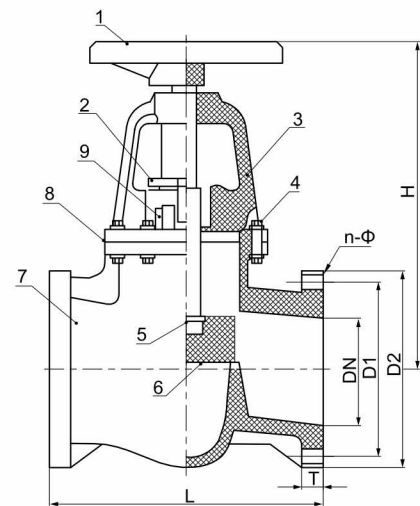
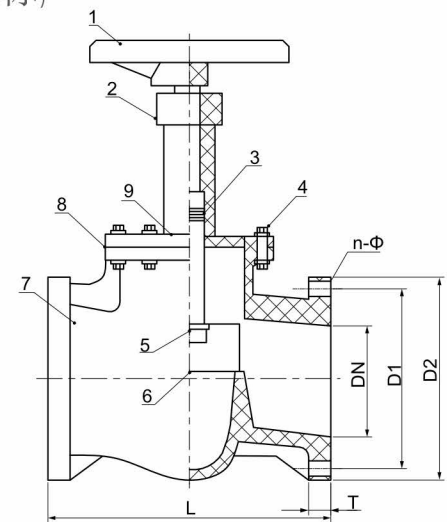
◆ DIMENSION LIST 外形尺寸表

注: 任何材质均可生产

Specification 规格	D1 (mm)	D2 (mm)	L (mm)	T (mm)	n-Φ (mm)
1/2"(15)	60	105	155	18	4-Φ14
3/4"(20)	70	105	155	18	4-Φ14
1"(25)	79	115	160	20	4-Φ14
1¼"(32)	89	135	185	20	4-Φ18
1½"(40)	98	150	200	20	4-Φ18

FLANGE GLOBE VALVE

截止阀
ASTM(美标)



◆DIMENSION LIST 外形尺寸表

注：任何材质均可生产

Specification 规格	D1 (mm)	D2 (mm)	L (mm)	T (mm)	n-Φ (mm)
2"(50)	121	165	230	20	4-Φ18

Specification 规格	D1 (mm)	D2 (mm)	H (mm)	L (mm)	T (mm)	n-Φ (mm)
2½"(65)	140	185	390	295	24	4-Φ18
3"(80)	152	200	400	310	25	8-Φ18
4"(100)	191	220	410	350	26	8-Φ18
5"(125)	216	250	430	400	30	8-Φ18
6"(150)	241	285	480	480	33	8-Φ23

◆ PART MATERIAL TABLE 零件材质表

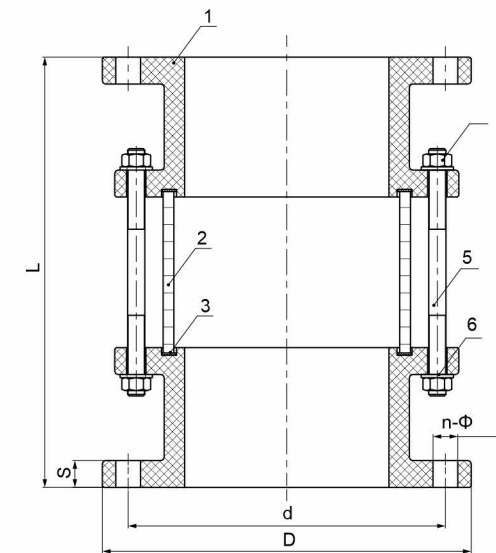
No. 序号	Name 零件名称	Material 材料					Qty. 数量
		CPVC	UPVC	PVDF	PPH	FRPP	
1	Handle Wheel 手轮	Alloy Material 合金料					1
2	Seal Nut 密封螺母	CPVC	UPVC	PVDF	PPH	FRPP	1
3	Stem seal 密封四氟	PTFE					1
4	Headed Stud 螺栓	Stell 钢					8
5	Stem 阀杆	(CPVC/UPVC/PVDF/PPH/FRPP)+Steel 钢					1
6	Capping 封盖	CPVC	UPVC	PVDF	PPH	FRPP	1
7	Body 阀体	CPVC	UPVC	PVDF	PPH	FRPP	1
8	Rubber Seal 密封橡胶	FPM	EPDM	FPM	EPDM		1
9	Bonnet 阀盖	CPVC	UPVC	PVDF	PPH	FRPP	1

No. 序号	Name 零件名称	Material 材料					Qty. 数量
		CPVC	UPVC	PVDF	PPH	FRPP	
1	Handle Wheel 手轮	Alloy Material 合金料					1
2	Seal Nut 密封螺母	CPVC	UPVC	PVDF	PPH	FRPP	1
3	Trestle 支架	(CPVC/UPVC/PVDF/PPH/FRPP)+Steel 钢					1
4	Headed Stud 螺栓	Stell 钢					8
5	Stem 阀杆	(CPVC/UPVC/PVDF/PPH/FRPP)+Steel 钢					1
6	Capping 封盖	CPVC	UPVC	PVDF	PPH	FRPP	1
7	Body 阀体	CPVC	UPVC	PVDF	PPH	FRPP	1
8	Rubber Seal 密封橡胶	FPM	EPDM	FPM	EPDM		1
9	Bonnet 阀盖	CPVC	UPVC	PVDF	PPH	FRPP	1

SIGHE GLASS

视镜

ASTM(美标)



◆ PART MATERIAL TABLE 零件材质表

No. 序号	Name 零件名称	Material 材料					Qty. 数量
		CPVC	UPVC	PVDF	PPH	FRPP	
1	Base 底座	PVC-C	PVC-U	PVDF	PPH	FRPP	2
2	Glass 玻璃	BSi 硼硅	BSi 硼硅	BSi 硼硅	BSi 硼硅	BSi 硼硅	1
3	Seal rubber 密封橡胶	FPM	EPDM	FPM	EPDM	EPDM	2
4	Hex nuts 六角螺母	304	Iron 铁	304	Iron 铁	Iron 铁	16-32
5	Double header stud 双头螺栓	304	Iron 铁	304	Iron 铁	Iron 铁	4-8
6	Filling piece 螺丝垫片	304	Iron 铁	304	Iron 铁	Iron 铁	16-32

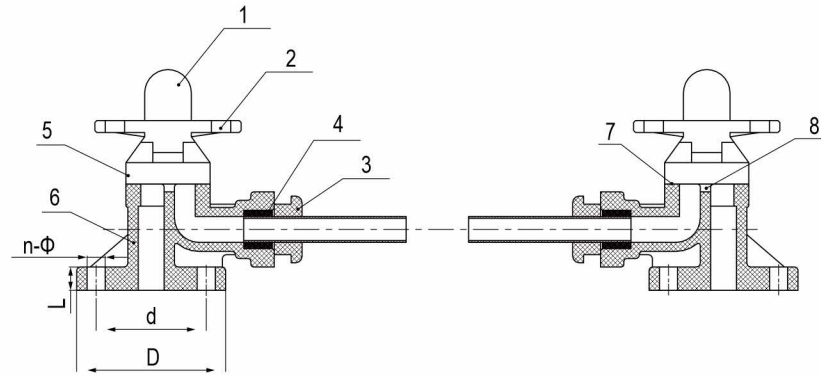
◆DIMENSION LIST 外形尺寸表

注：任何材质均可生产

Specification 规格	D (mm)	d (mm)	L (mm)	s (mm)	n-Φ (mm)
1"(25)	115	79	238	15	4-Φ16
1½"(40)	150	98	230	16	4-Φ16
2"(50)	165	121	233	17	4-Φ19
2½"(65)	195	140	277	20	4-Φ19
3"(80)	195	152	277	20	8-Φ19
4"(100)	220	191	310	21	8-Φ19
5"(125)	250	216	350	26	8-Φ22
6"(150)	285	241	385	27	8-Φ23
8"(200)	340	299	400	25	8-Φ23x29

LIQUID LEVEL GAUGE

液面计
ASTM(美标)



◆PART MATERIAL TABLE 零件材质表

No. 序号	Name 零件名称	Material 材料					Qty. 数量
		CPVC	UPVC	PVDF	PPH	FRPP	
1	限位罩	AS	AS	AS	AS	AS	1
2	Hand Wheel 手轮	Alloy Material 合金料					1
3	连接杆	CPVC	UPVC	PVDF	PPH	FRPP	1
4	密封件	PTFE	PTFE	PTFE	PTFE	PTFE	4
5	Bonnet 阀盖	CPVC	UPVC	PVDF	PPH	FRPP	1
6	Body 阀体	CPVC	UPVC	PVDF	PPH	FRPP	1
7	Diaphragm 膜片	F46	F46	F46	F46	F46	1
8	Seal rubber 密封橡胶	EPDM	EPDM	EPDM	EPDM	EPDM	1

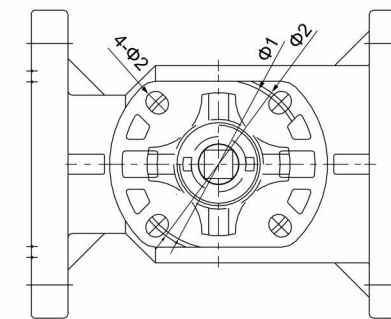
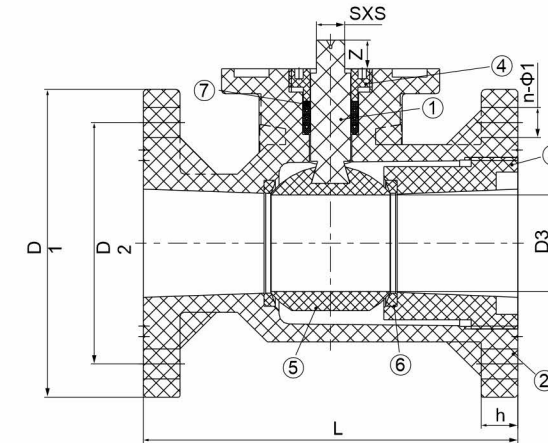
◆DIMENSION LIST 外形尺寸表

注:任何材质均可生产

Specification 规格	D (mm)	d (mm)	L (mm)	n-Φ (mm)
1/2"(15)	95	60	20	4-Φ16
3/4"(20)	105	70	20	4-Φ16
1"(25)	115	79	20	4-Φ16
1¼"(32)	135	89	20	4-Φ16
1½"(40)	145	98	20	4-Φ16
2"(50)	160	121	20	4-Φ19

PVC-C ELECTRIC & PNEUMATIC FLANGED BALL VALVE

PVC-C 电、气动法兰球阀 (带平)
ASTM(美标)



PNEUMATIC

ELECTRIC

◆PART MATERIAL TABLE 零件材质表

No. 序号	Name 零件名称	Material 材料	Qty. 数量
1	Stem 电、气动阀杆	CPVC	1
2	Body 阀体	CPVC	1
3	Seal seat 密封座	CPVC	1
4	Inner plug 四氟压圈	CPVC	1
5	Ball 球	CPVC	1
6	Stem seal 球密封四氟	PTFE	2
7	Stem seal 头颈密封四氟	PTFE	4

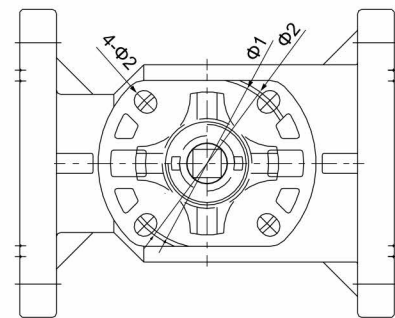
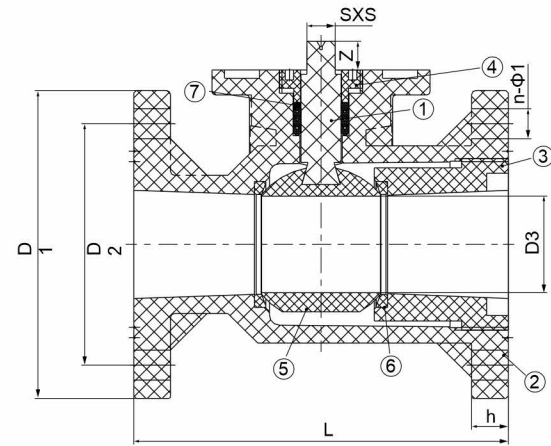
◆DIMENSION LIST 外形尺寸表

Specification 规格	D1 (mm)	D2 (mm)	D3 (mm)	L (mm)	h (mm)	n-Φ1 (mm)	Φ1 (mm)	Φ2 (mm)	SXS (mm)	4-Φ2 (mm)	Z (mm)
3/4"(20)	100	69.9	18.5	120	16	4-Φ16	70	72	11X11	4-Φ10X11	15
1"(25)	110	79.4	22	130	16	4-Φ16	70	72	11X11	4-Φ10X11	15
1¼"(32)	115	88.9	27	145	18	4-Φ16	70	72	11X11	4-Φ10X11	15
1/2"(40)	125	98.4	35.5	168	20	4-Φ16	70	72	14X14	4-Φ10X11	16.5
2"(50)	150	120.7	44	180	20	4-Φ18	70	72	14X14	4-Φ10X11	16.5
1/2"(65)	180	139.7	58	225	22	4-Φ18	70	102	17X17	4-Φ10/Φ12	17
3"(80)	190	152.4	64.5	255	25	8-Φ18	102	102.5	22X22	4-Φ12X13.25	20
4"(100)	229	190.5	78	280	25	8-Φ18	102	104.5	22X22	4-Φ12X13.25	20
5"(125)	254	215.9	97	350	30	8-Φ19	124	126	22X22	4-Φ14X15	25
6"(150)	284	241.3	110	400	30	8-Φ19	124	126	22X22	4-Φ14X15	27
12"(300)	485	431.8	212	600	46	12-Φ26	125	102.5	22X22	4-Φ13X14.25	38.5

PVC-C ELECTRIC & PNEUMATIC FLANGED BALL VALVE

PVC-C 电、气动法兰球阀 (带平台)

ASTM(美标)



◆PART MATERIAL TABLE 零件材质表

No. 序号	Name 零件名称	Material 材料	Qty. 数量
1	Stem 电、气动阀杆	UPVC	1
2	Body 阀体	UPVC	1
3	Seal seat 密封座	UPVC	1
4	Inner plug 四氟压圈	UPVC	1
5	Ball 球	UPVC	1
6	Stem seal 球密封四氟	PTFE	2
7	Stem seal 头颈密封四氟	PTFE	4

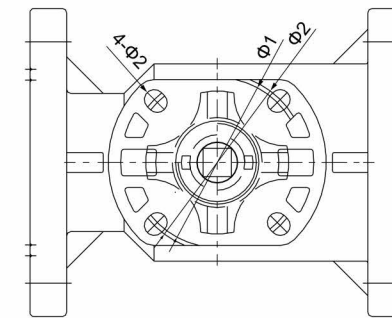
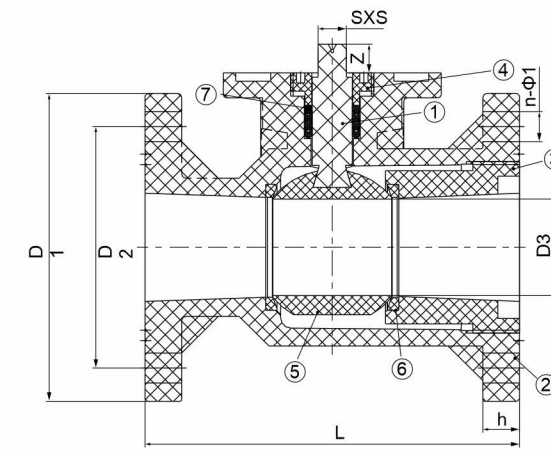
◆DIMENSION LIST 外形尺寸表

Specification 规格	D1 (mm)	D2 (mm)	D3 (mm)	L (mm)	h (mm)	n-φ1 (mm)	φ1 (mm)	φ2 (mm)	SXS (mm)	4-φ2 (mm)	Z (mm)
3/4"(20)	100	69.9	18.5	120	16	4-φ16	70	72	11X11	4-φ10X11	15
1"(25)	110	79.4	22	130	16	4-φ16	70	72	11X11	4-φ10X11	15
1/4"(32)	115	88.9	27	145	18	4-φ16	70	72	11X11	4-φ10X11	15
1/2"(40)	125	98.4	35.5	168	20	4-φ16	70	72	14X14	4-φ10X11	16.5
2"(50)	150	120.7	44	180	20	4-φ18	70	72	14X14	4-φ10X11	16.5
1/2"(65)	180	139.7	58	225	22	4-φ18	70	102	17X17	4-φ10/φ12	17
3"(80)	190	152.4	64.5	255	25	8-φ18	102	102.5	22X22	4-φ12X13.25	20
4"(100)	229	190.5	78	280	25	8-φ18	104.5	104.5	22X22	4-φ12X13.25	20
5"(125)	254	215.9	97	350	30	8-φ19	126	126	22X22	4-φ14X15	25
6"(150)	285	241.3	110	400	30	8-φ24	126	126	22X22	4-φ14X15	27
12"(300)	485	431.8	212	600	46	12-φ26	125	102.5	22X22	4-φ13X14.25	38.5

PVDF ELECTRIC & PNEUMATIC FLANGED BALL VALVE

PVDF 电、气动法兰球阀 (带平台)

ASTM(美标)



◆PART MATERIAL TABLE 零件材质表

No. 序号	Name 零件名称	Material 材料	Qty. 数量
1	Stem 电、气动阀杆	PVDF	1
2	Body 阀体	PVDF	1
3	Seal seat 密封座	PVDF	1
4	Inner plug 四氟压圈	PVDF	1
5	Ball 球	PVDF	1
6	Stem seal 球密封四氟	PTFE	2
7	Stem seal 头颈密封四氟	PTFE	4

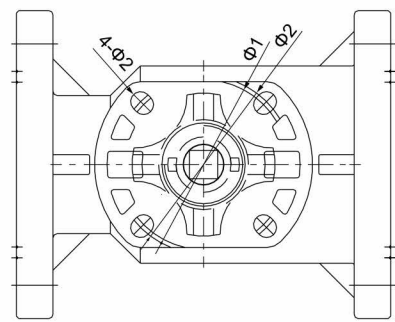
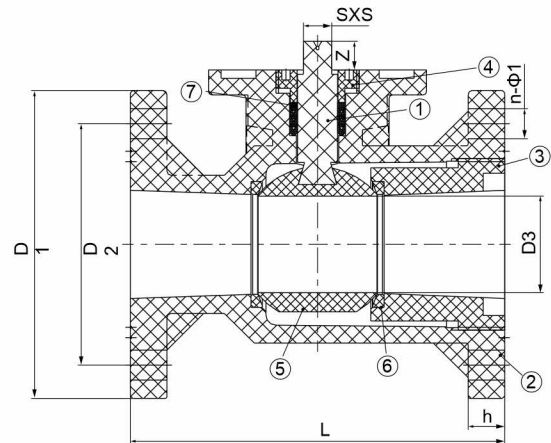
◆DIMENSION LIST 外形尺寸表

Specification 规格	D1 (mm)	D2 (mm)	D3 (mm)	L (mm)	h (mm)	n-φ1 (mm)	φ1 (mm)	φ2 (mm)	SXS (mm)	4-φ2 (mm)	Z (mm)
3/4"(20)	100	69.9	18.5	120	16	4-φ16	70	72	11X11	4-φ10X11	15
1"(25)	110	79.4	22	130	16	4-φ16	70	72	11X11	4-φ10X11	15
1/4"(32)	115	88.9	27	145	18	4-φ16	70	72	11X11	4-φ10X11	15
1/2"(40)	125	98.4	35.5	168	20	4-φ16	70	72	14X14	4-φ10X11	16.5
2"(50)	150	120.7	44	180	20	4-φ18	70	72	14X14	4-φ10X11	16.5
1/2"(65)	180	139.7	58	225	22	4-φ18	70	102	17X17	4-φ10/φ12	17
3"(80)	190	152.4	64.5	255	25	8-φ18	102	102.5	22X22	4-φ12X13.25	20
4"(100)	229	190.5	78	280	25	8-φ18	102	104.5	22X22	4-φ12X13.25	20
5"(125)	254	215.9	97	350	30	8-φ19	124	126	22X22	4-φ14X15	25
6"(150)	241	241.3	110	400	29	8-φ23	124	126	22X22	4-φ14X15	27
12"(300)	485	431.8	212	600	46	12-φ26	125	102.5	22X22	4-φ13X14.25	38.5

PPH ELECTRIC & PNEUMATIC FLANGED BALL VALVE

PPH 电、气动法兰球阀 (带平台)

ASTM(美标)



PNEUMATIC

ELECTRIC

◆PART MATERIAL TABLE 零件材质表

No. 序号	Name 零件名称	Material 材料	Qty. 数量
1	Stem 电、气动阀杆	PPH	1
2	Body 阀体	PPH	1
3	Seal seat 密封座	PPH	1
4	Inner plug 四氟压圈	PPH	1
5	Ball 球	PPH	1
6	Stem seal 球密封四氟	PTFE	2
7	Stem seal 头颈密封四氟	PTFE	4

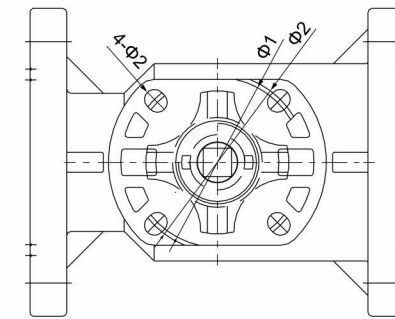
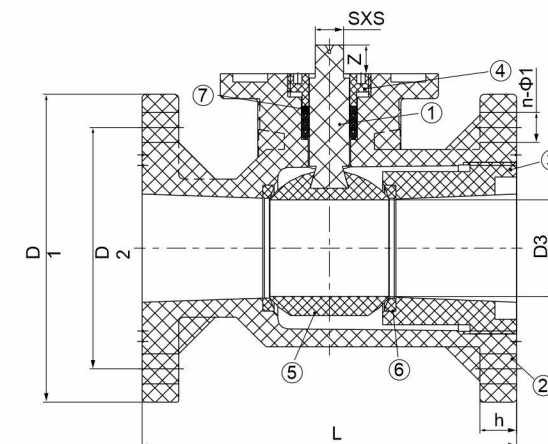
◆DIMENSION LIST 外形尺寸表

Specification 规格	D1 (mm)	D2 (mm)	D3 (mm)	L (mm)	h (mm)	n-φ1 (mm)	φ1 (mm)	φ2 (mm)	SXS (mm)	4-φ2 (mm)	Z (mm)
3/4"(20)	100	69.9	18.5	120	16	4-φ16	70	72	11X11	4-φ10X11	15
1"(25)	110	79.4	22	130	16	4-φ16	70	72	11X11	4-φ10X11	15
1/4"(32)	115	88.9	27	145	18	4-φ16	70	72	11X11	4-φ10X11	15
1/2"(40)	125	98.4	35.5	168	20	4-φ16	70	72	14X14	4-φ10X11	16.5
2"(50)	150	120.7	44	180	20	4-φ18	70	72	14X14	4-φ10X11	16.5
1/2"(65)	180	139.7	58	225	22	4-φ18	70	102	17X17	4-φ10/φ12	17
3"(80)	190	152.4	64.5	255	25	8-φ18	102	102.5	22X22	4-φ12X13.25	20
4"(100)	229	190.5	78	280	25	8-φ18	102	104.5	22X22	4-φ12X13.25	20
5"(125)	254	215.9	97	350	30	8-φ23	124	126	22X22	4-φ14X15	25
6"(150)	278	241.3	110	400	30	8-φ23	125	126	22X22	4-φ14X15	27
12"(300)	485	431.8	212	600	46	12-φ26	125	102.5	22X22	4-φ13X14.25	38.5

FRPP ELECTRIC & PNEUMATIC FLANGED BALL VALVE

FRPP 电、气动法兰球阀 (带平台)

ASTM(美标)



PNEUMATIC

ELECTRIC

◆PART MATERIAL TABLE 零件材质表

No. 序号	Name 零件名称	Material 材料	Qty. 数量
1	Stem 电、气动阀杆	FRPP	1
2	Body 阀体	FRPP	1
3	Seal seat 密封座	FRPP	1
4	Inner plug 四氟压圈	FRPP	1
5	Ball 球	FRPP	1
6	Stem seal 球密封四氟	PTFE	2
7	Stem seal 头颈密封四氟	PTFE	4

◆DIMENSION LIST 外形尺寸表

Specification 规格	D1 (mm)	D2 (mm)	D3 (mm)	L (mm)	h (mm)	n-φ1 (mm)	φ1 (mm)	φ2 (mm)	SXS (mm)	4-φ2 (mm)	Z (mm)
3/4"(20)	100	69.9	18.5	120	16	4-φ16	70	72	11X11	4-φ10X11	15
1"(25)	110	79.4	22	130	16	4-φ16	70	72	11X11	4-φ10X11	15
1/4"(32)	115	88.9	27	145	18	4-φ16	70	72	11X11	4-φ10X11	15
1/2"(40)	125	98.4	35.5	168	20	4-φ16	70	72	14X14	4-φ10X11	16.5
2"(50)	150	120.7	44	180	20	4-φ18	70	72	14X14	4-φ10X11	16.5
1/2"(65)	180	139.7	58	225	22	4-φ18	70	102	17X17	4-φ10/φ12	17
3"(80)	190	152.4	64.5	255	25	8-φ18	102	102.5	22X22	4-φ12X13.25	20
4"(100)	229	190.5	78	280	25	8-φ18	102	104.5	22X22	4-φ12X13.25	20
5"(125)	254	215.9	97	350	30	8-φ19	124	126	22X22	4-φ14X15	25
6"(150)	281	241.3	110	400	30	8-φ24	124	126	22X22	4-φ14X15	27
12"(300)	485	431.8	212	600	46	12-φ26	125	102.5	22X22	4-φ13X14.25	38.5

ELECTRIC & PNEUMATIC SOCKET BALL VALVE

电、气动由任球阀

ASTM(美标)



PNEUMATIC

ELECTRIC

◆PART MATERIAL TABLE 零件材质表

No. 序号	Name 零件名称	Material 材料		Qty. 数量
		CPVC	UPVC	
1	电/气动支架	Alloy Material 合金料		1
2	Stem 阀杆	CPVC	UPVC	1
3	Body 阀体	CPVC	UPVC	2
4	密封座O型圈1	FPM	EPDM	1
5	Seal seat 密封座	CPVC	UPVC	1
6	密封座O型圈2	FPM	EPDM	2
7	密封座O型圈3	FPM	EPDM	2
8	Stem seal 密封四氟	PTFE	PTFE	2
9	Ball 球	CPVC	UPVC	1
10	压帽	CPVC	UPVC	2
11	美标由任接头	CPVC	UPVC	2
12	阀杆O型圈	FPM	EPDM	2
13	阀杆连接件	Alloy Material 合金料		1

注: 任何材质均可生产

◆DIMENSION LIST 外形尺寸表

Specification 规格	D (mm)	D1 (mm)	L (mm)	Z (mm)	H (mm)	Φ1 (mm)	L1 x L1 (mm)	L2 (mm)	n-Φ1 (mm)
1/2"(15)	50	21.34	110	22.5	87.8	Φ50	11x11	13	4-Φ6.5
3/4"(20)	58	26.67	126	25.5	97.5	Φ50	11x11	13	4-Φ6.5
1"(25)	70	33.4	140	29	106.6	Φ50	11x11	13	4-Φ6.5
1¼"(32)	85	42.16	160	32	123.5	Φ50	14x14	17	4-Φ6.5
1½"(40)	98	48.26	170	35	138.5	Φ50	14x14	17	4-Φ6.5
2"(50)	124	60.32	190	38.5	163.5	Φ50	14x14	17	4-Φ6.5
2½"(65)	135	73.02	230	45	191	Φ70	17x17	21	4-Φ9
3"(80)	158	88.9	280	48	222.5	Φ70	17x17	21	4-Φ9
4"(100)	192	114.3	340	57.5	261.5	Φ70 Φ102	22x22	21	4-Φ9 4-Φ11

ELECTRIC & PNEUMATIC BUTTERFLY VALVE

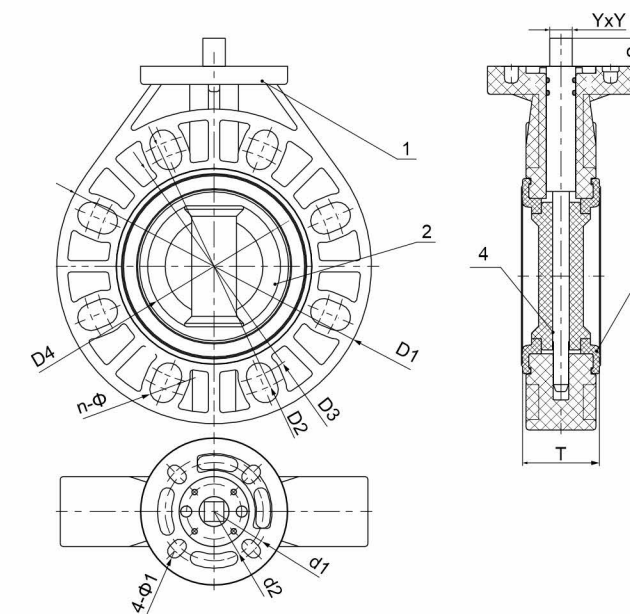
电、气动通用型无头蝶阀

ASTM(美标)



PNEUMATIC

ELECTRIC



◆PART MATERIAL TABLE 零件材质表

No. 序号	Name 零件名称	Material 材料					Qty. 数量
		CPVC	UPVC	PVDF	PPH	FRPP	
1	Body 阀体	CPVC	UPVC	PVDF	PPH	FRPP	1
2	Disc 阀瓣	CPVC	UPVC	PVDF	PPH	FRPP	1
3	Seal rubber 密封橡胶	FPM	EPDM	FPM	EPDM		1
4	Stem 阀杆	Stell 钢					1

注: 任何材质均可生产

◆DIMENSION LIST 外形尺寸表

Specification 规格	D1 (mm)	D2 (mm)	D3 (mm)	D4 (mm)	T (mm)	n-Φ (mm)	YxY (mm)	S (mm)	d1 (mm)	d2 (mm)	4-Φ1 (mm)
1¼"(32)	140	106	89	33	35	4-Φ17	11x11	12	50	50	4-Φ7
1½"(40)	148	110	98	41.5	39	4-Φ19	14x14	12	72	68	4-Φ10
2"(50)	162	125	110	48.5	43	4-Φ19	14x14	12	72	68	4-Φ10
2½"(65)	180	145	130	63	45	4-Φ19	14x14	16	72	68	4-Φ10
3"(80)	198	160	150	75.5	45	8-Φ19	14x14	16	72	68	4-Φ10
4"(100)	225	191	170	95	56.5	8-Φ19	17x17	18	80	70	4-Φ10
5"(125)	255	216	200	120	65	8-Φ23	17x17	18	80	70	4-Φ10
6"(150)	285	241	225	143.5	75	8-Φ23	17x17	23	80	70	4-Φ10
8"(200)	340	299	295	195	85	8-Φ23	22x22	23	80	70	4-Φ10
10"(250)	423	366	350	245.5	110	12-Φ23x32	22x22	30	102	102	4-Φ12
12"(300)	495	436	400	291.5	115	12-Φ23x42	22x22	30	102	102	4-Φ12
14"(350)	555	470	460	340	127	16-Φ22 12-Φ29	22x22	35	102	102	4-Φ12
16"(400)	607	540	515	399	140	16-Φ23x45	27x27	35	140	140	4-Φ18
18"(450)	645	583	565	446	150	20-Φ28.5 16-Φ34.5	27x27	40	165	165	4-Φ22
20"(500)	708	640	615	494	150	20-Φ26x41	36x36	40	165	165	4-Φ22
24"(600)	820	750	725	570	170	20-Φ35x47	36x36	40	254	254	4-Φ22

PIPE FITTINGS

AUXILIARY MATERIALS OF CONSTRUCTION 管件管材辅助施工材料



PVC PIPE GLUE

PVC 管道胶水



- ◆ Grey
- ◆ 3-years warranty
- ◆ Compliance with ASTM D-2564 standards

- ◆ 灰色
- ◆ 三年保质期
- ◆ 符合ASTM D-2564标准

- ◆ High viscosity, medium dry;
- ◆ Suitable for all sizes of PVC pipes and fittings up to 24" (630 mm);
- ◆ With an excellent ability to fill the gap between the pipe and the fittings and provides longer construction time at normal temperature.
- ◆ 高粘度，中等干化；
- ◆ 适用所有规格的24" (630 毫米)以下口径的PVC管和管配件。
- ◆ 具有卓越的填补管道与管件之间缝隙的能力，在常温下可提供更长的施工时间。

PVC-C PIPE GLUE

PVC-C 管道胶水



- ◆ Grey
- ◆ 3-years warranty
- ◆ Compliance with ASTM ASTM F-493 standards

- ◆ 灰色
- ◆ 三年保质期
- ◆ 符合ASTM F-493标准

- ◆ High viscosity, medium dry;
- ◆ Suitable for all sizes of PVC-C pipes and fittings up to 24" (630 mm);
- ◆ With an excellent ability to fill the gap between the pipe and the fittings and provides longer construction time at normal temperature.
- ◆ 高粘度，中等干化；
- ◆ 适用所有规格的24" (630 毫米)以下口径的PVC-C管和管配件。
- ◆ 具有卓越的填补管道与管件之间缝隙的能力，在常温下可提供更长的施工时间

PRE-ADHESIVE

预粘胶



- ◆ Bright color
- ◆ 2-years warranty
- ◆ Compliance with ASTM F-656 standards

- ◆ 透明
- ◆ 二年保质期
- ◆ 符合ASTM F-656标准

- ◆ Soften the surface of the product, quickly soften the wall and increase the bond strength.
- ◆ Surface softening treatment for PVC and PVC-C pipe and pipe fittings before applying adhesive.

- ◆ 表面软化处理产品。快速软化管壁，增加粘接强度。
- ◆ 用于PVC和CPVC管与管配件涂抹胶粘剂之前的表面软化处理

MISUSE OF GLUE FOR FIRST AID

误用胶水的急救

- ◆ **Inhalation:** If inhalation and collapsed, please move the patients to fresh air; if patients with difficulty in breathing, give oxygen and requested medical attention;
- ◆ **Eye or skin contact:** use of adequate water rinse eyes for 15 minutes, if the aggravating circumstances, please seek medical treatment as soon as possible;
- ◆ **Eating:** such eat mistaken, avoid spit and send to hospital for cure.
- ◆ 吸入:若因吸入而昏迷, 请将患者移至新鲜空气中;如果患者呼吸困难请给予氧气并请医生诊治;
- ◆ 眼睛或皮肤接触:使用充足的水冲洗眼睛15分钟, 如果情形加重请赶快就医;
- ◆ 食用: 如误食,请勿进行催吐, 应立即请医生诊治。

STORAGE CONDITIONS

储藏条件

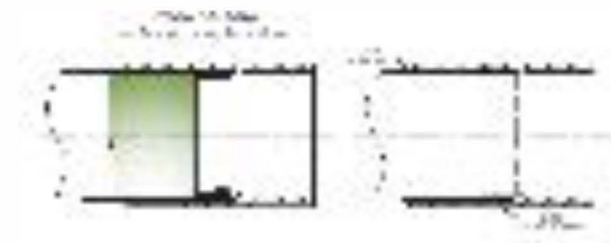
Adhesive should be stored in 15°C-38°C in the day environment, avoid sunlight, and maintain a period of 2 years (use it as soon as possible after opening).

胶粘剂应存放在15°C-38°C的干燥环境中,避免日照, 保持期为2年(包装一经开启, 请尽快使用完毕)

THE BASIC CEMENTATION PRINCIPLE FOR SOLVENT ADHESIVE

溶剂型粘合剂的基本粘结原理

- ◆ Apply preliminary glue to make the pipe and sufficiently soft and soaked with the glue;
- ◆ Use sufficient glue so that the gaps between the pipes and joints are properly filled;
- ◆ Bond the pipes and joints when the glue is wet;
- ◆ Since the ends sustain around 70% of the strength, the pipes must be pushed to the end.
- ◆ 涂抹预粘剂, 使管材和管件承插表面充分软化和渗透;
- ◆ 使用足够的胶水, 胶水可以填补管道和管件之间的空隙;
- ◆ 当表面胶水还保持湿润时及时粘接管材和管件;
- ◆ 一定将管道推到底, 因底部将承受70%左右的强度。



BONDING TECHNOLOGY OF

PIPELINES

管道粘接技术

1. The ends of pipes must be cut neatly and must be perpendicular to the central axis of the pipe.
2. Remove the flash in the out of the pipe and chamfer (10 to 15 degrees)
3. Wipe off the dirt, oil stains and moisture in and out of the pipes (since they adversely affect bonding strength)
4. Use measuring instruments to measure the depth of the reception of the joints and mark the measured data on the inserting part of the joints.

Start the bonding

- ① Firstly, apply the preliminary glue on the joint. It is prohibited to allow the glue to flow into the joints.
- ② Then apply the preliminary glue on the scope marked on the pipe.
- ③ Homogeneously apply glue on the inserting part of the pipe, the applied length being the marking scope.
- ④ Immediately afterwards, use the same brush to apply glue onto the receiver of joint.
- ⑤ When the glue is wet, immediately insert the joint and use enough force to push it to the end and twist it at an angle of 15 to 45 degrees.
- ⑥ Push the glued connection of the joints, make sure the joints will not be pushed out under static force.
- ⑦ Upon the piece of cloth to wipe off the redundant glue at the connecting part.
- ⑧ Use a piece of cloth to wipe off the redundant glue at the connecting part.

- 一、管材端口应切割平整与管的轴线垂直, 可用定管箱和手锯或切管器。
- 二、清除管内外碎粒子和倒角。(10-15度)
- 三、擦去管内外灰尘油迹和水分(水分、灰尘和有机会影响粘结强度的东西)
- 四、用测量工具量取管件承插深度, 将量取尺寸标记在管材插口处。
- 五、开始粘结 1、首先用力将预粘胶涂于管件承插内壁, 此操作严禁预粘胶流入管件内部 2、然后用力将预粘胶涂于管材插口标记范围 3、在管材插口处涂抹均匀的胶水, 胶水涂抹长度为标记范围 4、紧接着用涂抹过管材的刷子在管件的承插内壁涂抹胶水
- 5、当胶水还是湿润时, 马上将管材插入管件, 并用足够的力度将管材推到管件的承底 6、按紧接好管道接口, 静止受力直到管件不会被推出为止
- 7、当接合管道工作完成后, 接口处应该有圈胶水 8、用布擦掉接口处多余的胶水

FIVE BASIC OPERATING METHODS

五项基本操作方法

1. The surface for bonding must be properly softened and soaked;
2. Sufficient glue is needed to fill the gaps between the pipes and joints;
3. The pipes and joints must be bonded when the glue is wet;
4. The pipes and pipe pieces must be pushed to the end;
5. Sufficient complete solidification time is required for drying before pressure is applied.
- 1、粘接的表面必须软化和渗透;
- 2、必须使用足量的胶水填充于管道和管件之间的空隙;
- 3、当表面胶水还保持湿润时必须马上粘接管道和管件;
- 4、一定将管材推到底, 管件承底;
- 5、加压前需要足够的固化时间。

◆ SOLVENT ADHESIVE AVERAGE INITIAL SOLIDIFICATION SCHEDULE
WELD. ONOPVC、CPVC、ABS 溶剂胶粘剂平均最初凝固时间表

Temperature range 温度范围口径	1/2-1-1/4"	1-1/2-2"	2-1/2-8"	10-15"	15"+
16至38°C.	2分钟min	5分钟min	30分钟min	2小时hour	4小时hour
5至16°C	5分钟min	10分钟min	2小时hour	8小时hour	16小时hour
-18至5°C	10分钟min	15分钟min	12小时hour	24小时hour	48小时hour

Note: The initial setting time refers to the time necessary for the pipe to be carefully moved after bonding, and should increase the initial setting time by 50% in wet or humid weather.

注: 最初凝固时间是指管道粘接后可以小心移动所必需的时间，在潮湿或湿润天气下应该增加 50% 的最初凝固时间。

◆ SOLVENT ADHESIVE AVERAGE DRYING SCHEDULE
WELD. ONPVC、PVC-C、ABS 溶剂胶粘剂平均干化时间表

Relative humidity 相对湿度 ≤60%口径	1/2-1 1/4"		1/2-2"		1/2-8"		10-15'	5'+
	≤1.1MPa	1.1-2.5MPa	≤1.1MPa	1.1-2.5MPa	≤1.1MPa	1.1-2.5MPa	≤1.1MPa	≤1.1MPa
16至38°C	15分钟min	6小时hour	35分钟min	12小时hour	1.5小时hour	24小时hour	24小时hour	48小时hour
5至16°C	20分钟min	12小时hour	45分钟min	24小时hour	4小时hour	48小时hour	48小时hour	96小时hour
-18至5°C	30分钟min	48小时hour	1小时hour	96小时hour	72小时hour	8天day	8天day	8天day

Note: Drying time refers to the time required to apply pressure affler pipe bonding, and should increase the drying time by 50% in wet or humid weather

注: 干化时间是指管道粘接后可以施加压力所必需的时间，在潮湿或湿润天气下应该增加 50% 的干化时间。

◆ NUMBER OF INTERFACES THAT SOLVENT ADHESIVES CAN BOND
IQT≈IL WELD. ON@PVC、PVC-C、ABS溶剂胶粘剂可粘接的接口数量

管道直径Pipe diameter 接口数量	1/2" 20mm	3/4" 25mm	1" 32mm	1 1/2" 50mm	2" 63mm	3" 90mm	4" 110mm	6" 160mm	8" 200mm	10" 250mm	12" 315mm	15" 380mm	18" 450mm
Number of interfaces	300	200	125	90	60	40	30	10	5	2-3	1~2	3/4	1/2

Note: 1. The number of interfaces of the pre-adhesive is twice that of the adhesive. The above is the test data and is for reference only.

Pre- adhesive P 68 or P-70, adhesive 724 and adhesive 711 are recommended for PVC and PVC-C pipes under controlled temperature and pressure chemical concentrations.

注: 1、预粘胶的接口数量为胶粘剂的两倍。以上为试验数据、仅供参考。2、在可控的温度、压力化学浓度下的PVC和CPVC管道，建议使用预粘胶P-68或P-70、PVC-C 胶粘剂724、PVC胶粘剂711。

BONDING UNDER LOW TEMPERATURE

低温气候下的连接

1. Bonding shouldn't be done in the morning or evening;
2. Store the glue at a warm or normal temperature place to increase its flowability;
3. Wipe off the moisture on the pipes or joints to be bonded;
4. If possible, expose the pipes or joints in the sunlight for several hours;
5. Due to the cold temperature, the drying time is longer than it is under normal temperature. After complete solidification, place it idle for a certain period before applying the pressure;
6. Under cold weather, the pipelines should be bonded section by section to avoid the movement of joints as much as possible;
7. Before the installation, read the pipe bonding technique carefully and conduct the installation as per the operation procedure.

- 1、尽量避免在早上和傍晚进行粘接；
- 2、储藏胶水于温暖或常温处增加胶水的流动性能；
- 3、将要粘接的管材和管件水分擦干；
- 4、若可能，管材和管件在阳光下放置数小时；
- 5、由于寒冷温度，干化时间需要比常温下长，完全干化后放置一段时间在系统试压为佳；
- 6、在寒冷天气下管线应分段连接，然后在段与段之间连接，尽量避免对新接头的移动；
- 7、安装前请仔细阅读管道粘接技术严格按照操作步骤去做。

BONDING UNDER HIGH TEMPERATURE

高温气候下的连接

1. The glue and preliminary glue shall be stored in a cool room with good ventilation;
2. If possible, the pipes and joints shall be also stored in a cool room with good ventilation;
3. Try to conduct the bonding of pipe shall be done in the morning;
4. Use a wet cloth to wipe the area on the pipes to be bonded. The vaporization of water can reduce the temperature by some degrees how even, before the bonding, make sure the connecting surfaces are completely dry;
5. When the bonding is done, make sure the glue is wet. If a pipe with large diameter is to be bonded, the work must be done under cooperation of many people;
6. Use glue with high viscosity for the bonding, because high viscosity glue dries up slowly and promises longer bonding time;
7. After the application of glue, the lid must be put on the container.

- 1、胶水和预粘胶需储藏在室内通风阴凉处；
- 2、若可能，管材和管件也应储藏在室内和阴凉处；
- 3、尽量在早晨时间安装粘接管道；
- 4、用湿布擦拭管道粘接处，水分的挥发可降低几度温度，但粘接前应保证连接面完全干燥；
- 5、当粘接管道时确定胶水表面仍然湿润，如果粘接大口径管道时，一定要多人合作安装；
- 6、使用粘度较高的胶水来粘接，因为粘稠度高的胶水干化时间较慢而同时给予较长时间的粘接时间；
- 7、胶水涂抹后应及时将盖子盖于胶瓶上。

PRECAUTIONS

注意事项

1. Always bear in mind that preliminary glue is prohibited for bonding of ABS pipes;
2. Fire is prohibited at the bonding site;
3. Bonding must not be done under rainy or snowy weather;
4. Bonding must not be done when the temperature at site is lower than -20°C;
5. Try to conduct the bonding in an area with good ventilation;
6. Try to avoid contact with skin or eyes;
7. Into contact with the local children.

- 1、切记当粘接 ABS 管道时严禁使用预粘胶；
- 2、施工现场严禁烟火；
- 3、露天现场雨天、雪天不能施工；
- 4、现场温度低于 -20°C 不能施工；
- 5、尽量在空气较流通的区域里作业；
- 6、尽量避免接触到皮肤、眼睛；
- 7、放到儿童不能接触的地方。

GUIDE TO INSTALL

安装指南



1. Cut pipe as square as possible
垂直切割管道



2. Pipe needs 10-15° chamfer (bevel).
remove any dirt
管道倒角 10-15°, 清理边角碎屑



3. Clean the adhesive surface
清洁粘接表面



4. A dry fit "slop" test and mark this distance
干插测试, 划涂胶线



5. Apply the primer to fitting first
预粘胶先涂抹管件



6. Apply the primer to pipe
预粘胶涂抹管道



7. Apply a second application of primer
to the fitting socket
再次涂抹管件



8. Apply the appropriate cement to
the pipe
胶粘剂涂抹管道



9. Apply the appropriate cement to the
fitting
胶粘剂涂抹管件



10. Apply a second application of
cement to the pipe
胶粘剂再次涂抹管道



11. While inserting, twist 1/8 to 1/4
turn until reaching socket bottom,
Hold for 30 seconds to eliminate
movement
边推边旋转 1/4 圈至底部, 按住 30 秒
防止反弹



12. Remove the excess cement from
the pipe and fitting
擦拭掉多余胶粘剂

Note: All sizes of PVC and PVC-C piping systems must be bonded with pre-viscose P-68 or P70.

注: 所有尺寸的 PVC、PVC-C 管路系统粘接, 都必须配套使用预粘胶 P-68 或 P70。

◆ Inch and millimeter conversion tables 英寸和毫米转换表

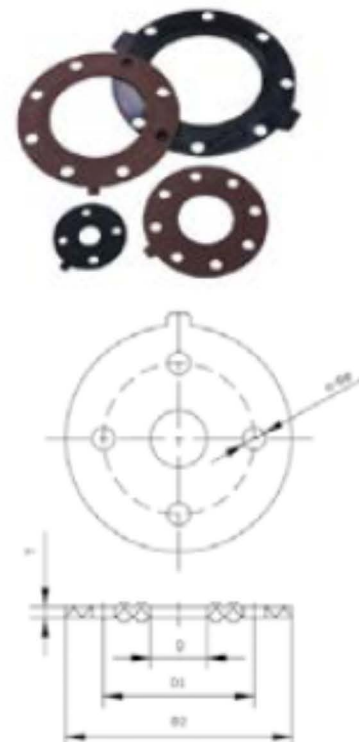
Inch 英寸	1/2	3/4	1	1-1/4	1-1/2	2	2-1/2	3	4	6	8	10	12	14	24	30
Millimeter 毫米	20	25	32	40	50	63	75	90	110	160	200	250	315	355	600	800

◆ Warranty and packing specifications 保质期和包装规格

Primer 预粘胶	PVC Primer PVC胶粘剂	Civil PVC Cements 民用PVC胶粘剂	CPVC Cements CPVC胶粘剂	ABS Cements ABS胶粘剂
3 years 年	3 years 年	2 years 年	2 years 年	3 years 年
QT, PT	Gal,QT,PT,HP,QP	1000g,500g,290g,150g	Gal,QT,PT,HP,QP	QT,PT

FLANGE GASKET

法兰垫片



DN 公称直径 (mm)	D	D1	D2	n-φ
1/2"(15)	18	60	89	4-φ16
3/4"(20)	27	70	95	4-φ16
1"(25)	34	79	108	4-φ16
1 1/4"(32)	37	89	117	4-φ16
1 1/2"(40)	41	98	127	4-φ16
2"(50)	61	121	152	4-φ19
2 1/2"(65)	69	140	178	4-φ19
3"(80)	89	152	191	4-φ19
4"(100)	101	191	229	8-φ19
5"(125)	125	216	254	8-φ22
6"(150)	151	241	279	8-φ22
8"(200)	203	299	343	8-φ22
10"(250)	254	362	406	12-φ25
12"(300)	324	432	483	12-φ25
14"(350)	354	477	533	12-φ29
16"(400)	404	540	597	16-φ29
18"(450)	470	578	635	16-φ32
20"(500)	530	635	700	20-φ32
24"(600)	650	750	815	20-φ35